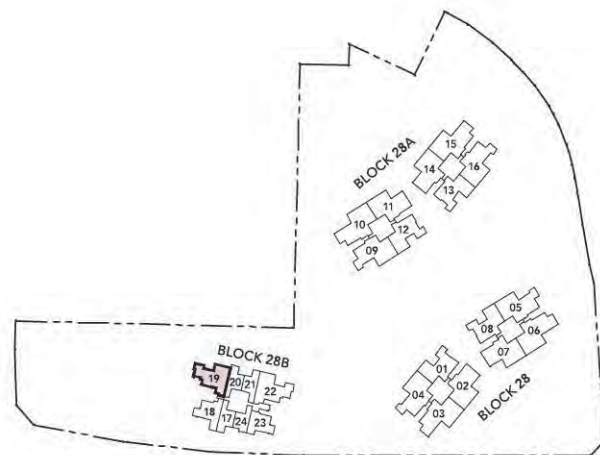


4-BEDROOM - TYPE D1-P1

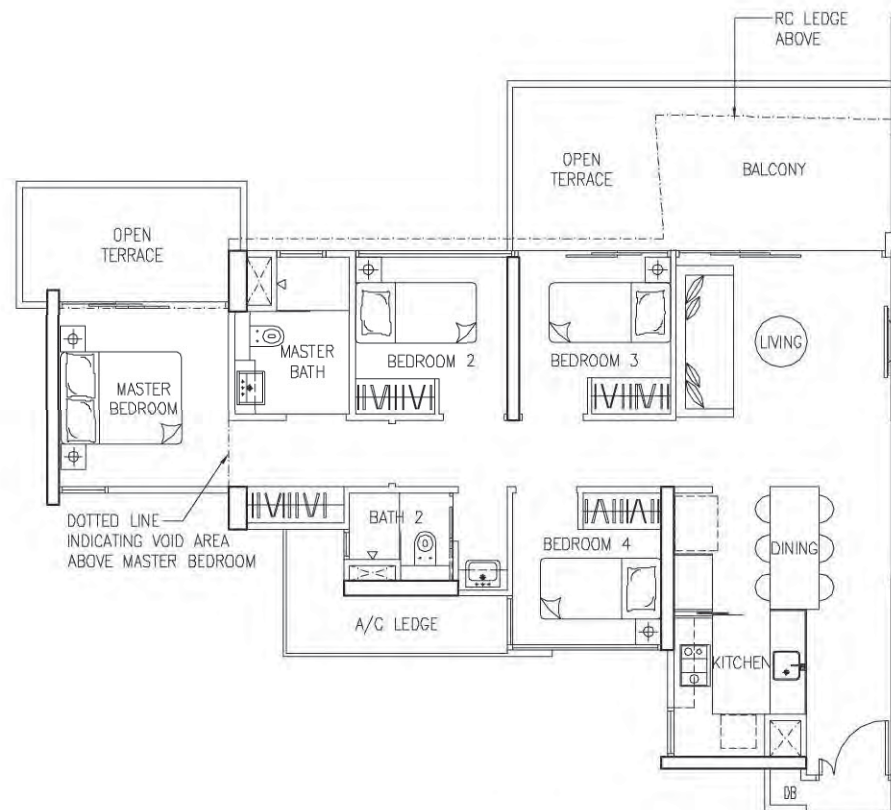
121 sq m / 1,302 sq ft

UNIT

#02-19



KEY PLAN (NOT TO SCALE)

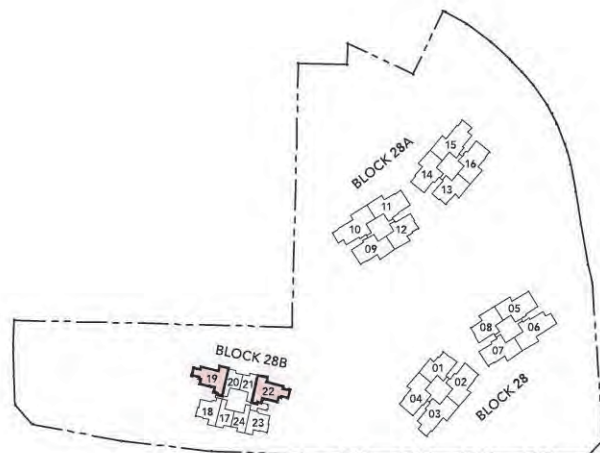


Plans are subject to any amendment as may be approved by the relevant authorities. All floor areas are approximate and are subject to final survey.

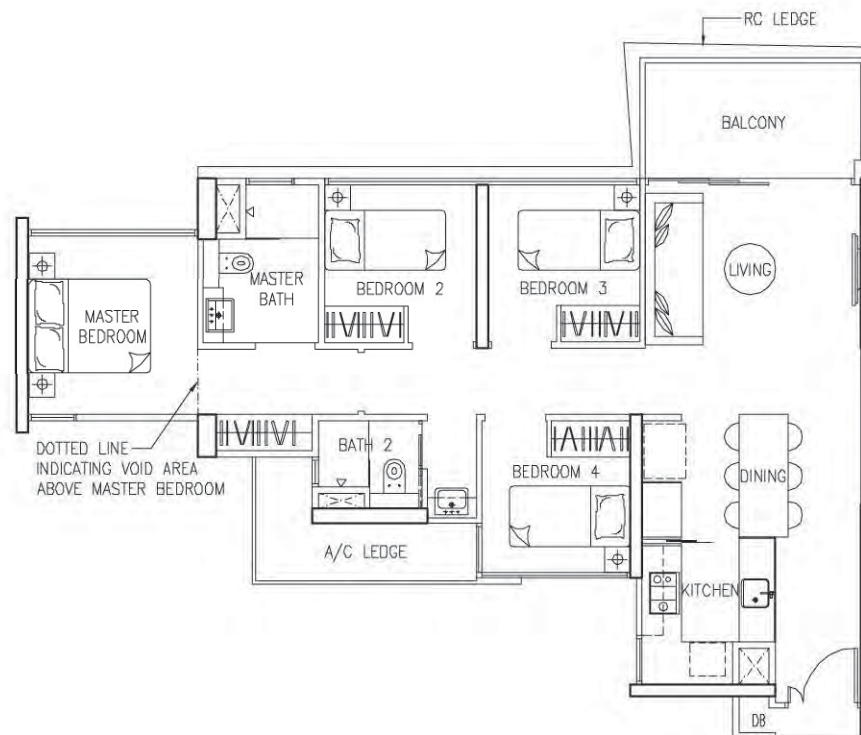
4-BEDROOM - TYPE 01

103 sq m / 1,109 sq ft

UNIT		UNIT (MIRROR)	
#04-19	#18-19	#04-22	#18-22
#06-19	#20-19	#06-22	#20-22
#08-19	#22-19	#08-22	#22-22
#10-19	#26-19	#10-22	#26-22
#12-19	#28-19	#12-22	#28-22
#16-19	#30-19	#16-22	#30-22



KEY PLAN (NOT TO SCALE)

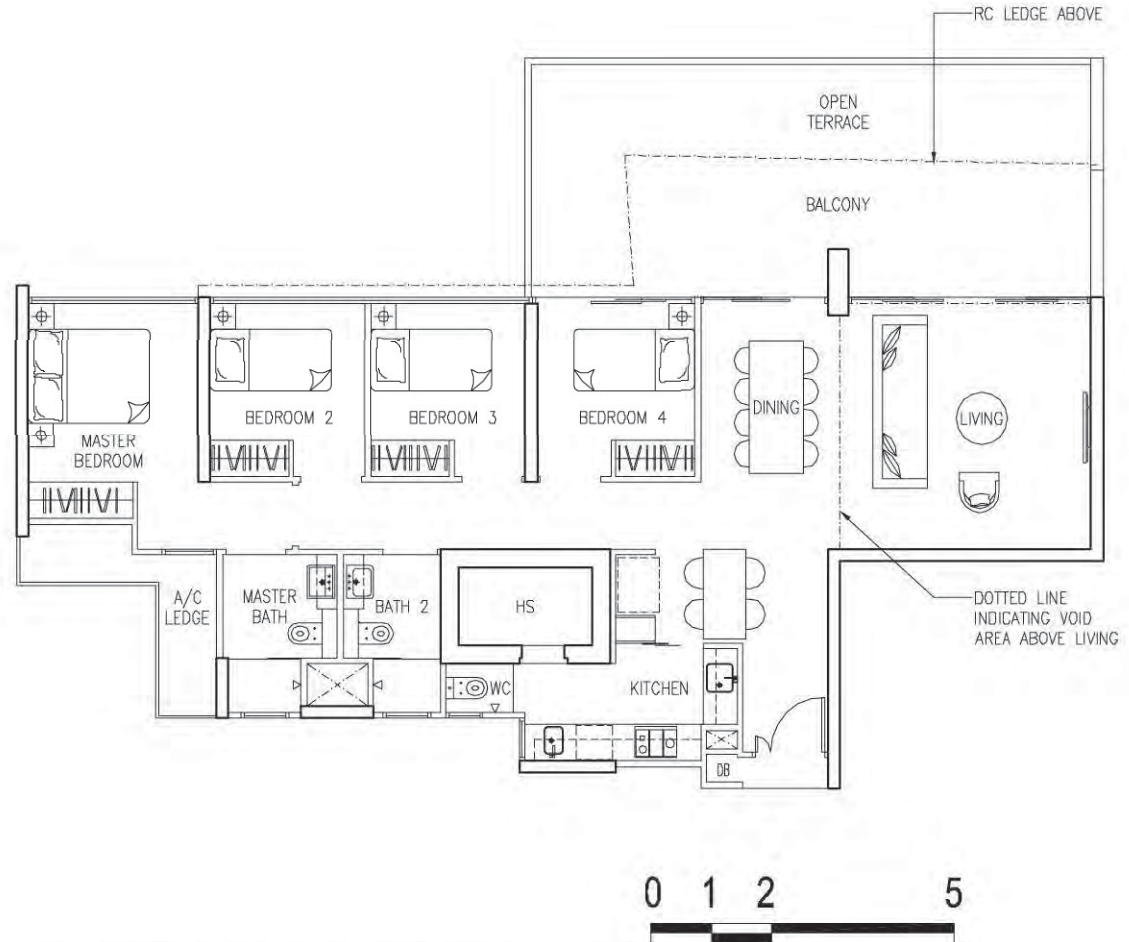
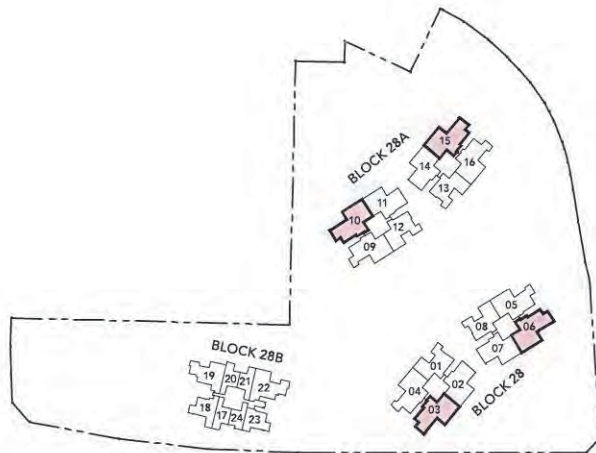


Plans are subject to any amendment as may be approved by the relevant authorities. All floor areas are approximate and are subject to final survey.

3-BEDROOM - TYPE 02-P

164 sq m / 1,765 sq ft

UNIT (MIRROR) UNIT UNIT UNIT (MIRROR)
#02-03 #02-06 #02-10 #02-15



Plans are subject to any amendment as may be approved by the relevant authorities. All floor areas are approximate and are subject to final survey.

4-BEDROOM - TYPE 02

141 sq m / 1,518 sq ft

UNIT (MIRROR)		UNIT		UNIT		UNIT (MIRROR)	
#04-03	#20-03	#04-06	#20-06	#04-10	#20-10	#04-15	#20-15
#06-03	#22-03	#06-06	#22-06	#06-10	#22-10	#06-15	#22-15
#08-03	#24-03	#08-06	#24-06	#08-10	#24-10	#08-15	#24-15
#10-03	#26-03	#10-06	#26-06	#10-10	#26-10	#10-15	#26-15
#12-03	#28-03	#12-06	#28-06	#12-10	#28-10	#12-15	#28-15
#14-03	#30-03	#14-06	#30-06	#14-10	#30-10	#14-15	#30-15
#16-03	#32-03	#16-06	#32-06	#16-10	#32-10	#16-15	#32-15
#18-03	#34-03	#18-06	#34-06	#18-10	#34-10	#18-15	#34-15

