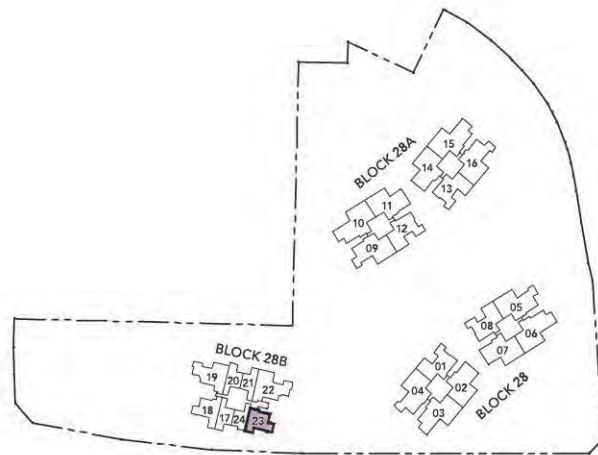


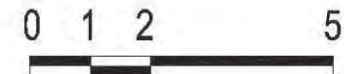
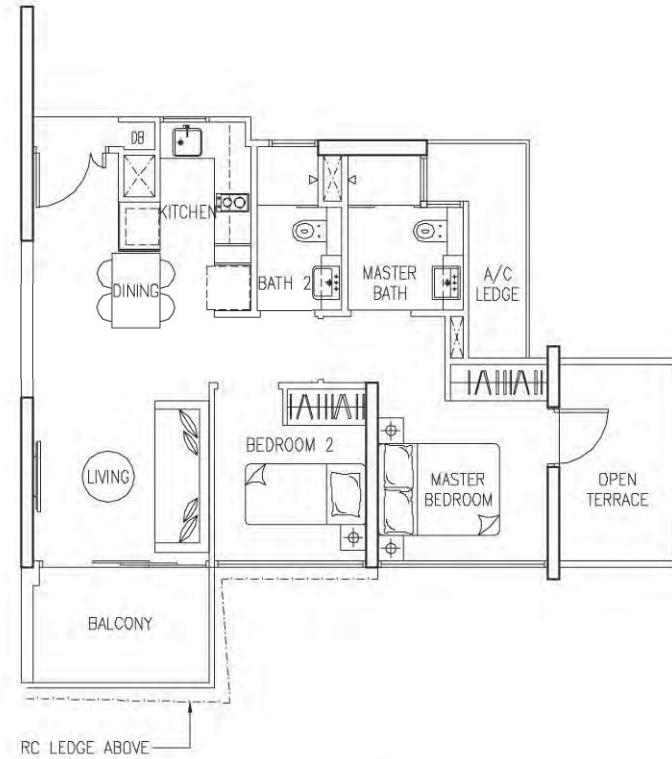
2-BEDROOM - TYPE B1-P

72 sq m / 775 sq ft

UNIT
#02-23



 KEY PLAN (NOT TO SCALE)



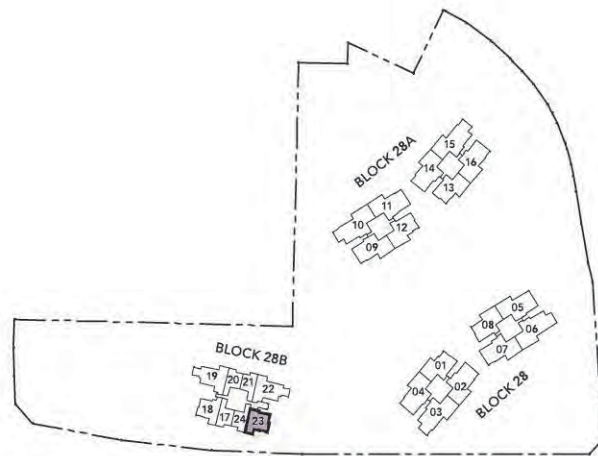
Plans are subject to any amendment as may be approved by the relevant authorities. All floor areas are approximate and are subject to final survey.

2-BEDROOM - TYPE B1

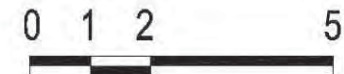
65 sq m / 700 sq ft

UNIT

#03-23 to #13-23,
#15-23 to #23-23,
#25-23 to #31-23.



KEY PLAN (NOT TO SCALE)



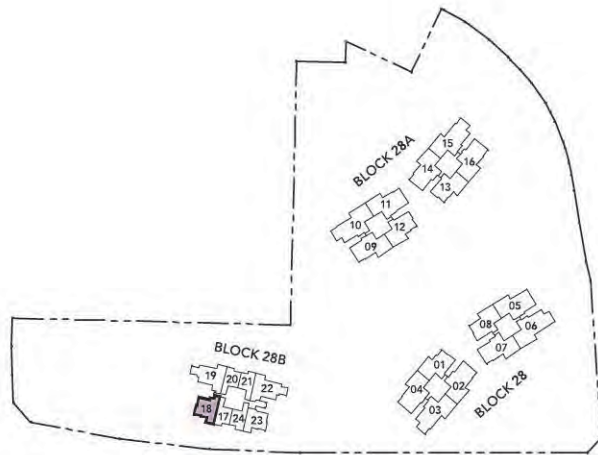
Plans are subject to any amendment as may be approved by the relevant authorities. All floor areas are approximate and are subject to final survey.

2-BEDROOM - TYPE B2

70 sq m / 753 sq ft

UNIT

#03-18 to #13-18,
#15-18 to #23-18,
#25-18 to #31-18.



 KEY PLAN (NOT TO SCALE)



Plans are subject to any amendment as may be approved by the relevant authorities. All floor areas are approximate and are subject to final survey.

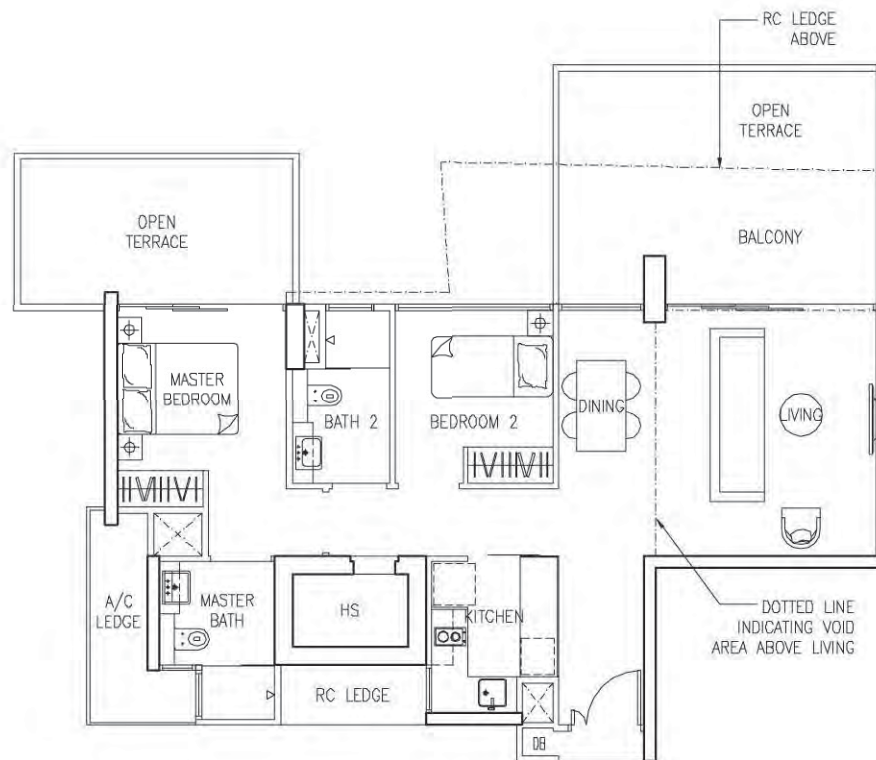
2-BEDROOM - TYPE B3-P

124 sq m / 1,335 sq ft

UNIT (MIRROR)	UNIT	UNIT	UNIT (MIRROR)
#02-01	#02-08	#02-12	#02-13



KEY PLAN (NOT TO SCALE)



Plans are subject to any amendment as may be approved by the relevant authorities. All floor areas are approximate and are subject to final survey.

2-BEDROOM - TYPE B3

103 sq m / 1,109 sq ft

UNIT (MIRROR)		UNIT		UNIT		UNIT (MIRROR)	
#04-01	#20-01	#04-08	#20-08	#04-12	#20-12	#04-13	#20-13
#06-01	#22-01	#06-08	#22-08	#06-12	#22-12	#06-13	#22-13
#08-01	#24-01	#08-08	#24-08	#08-12	#24-12	#08-13	#24-13
#10-01	#26-01	#10-08	#26-08	#10-12	#26-12	#10-13	#26-13
#12-01	#28-01	#12-08	#28-08	#12-12	#28-12	#12-13	#28-13
#14-01	#30-01	#14-08	#30-08	#14-12	#30-12	#14-13	#30-13
#16-01	#32-01	#16-08	#32-08	#16-12	#32-12	#16-13	#32-13
#18-01	#34-01	#18-08	#34-08	#18-12	#34-12	#18-13	#34-13



 KEY PLAN (NOT TO SCALE)

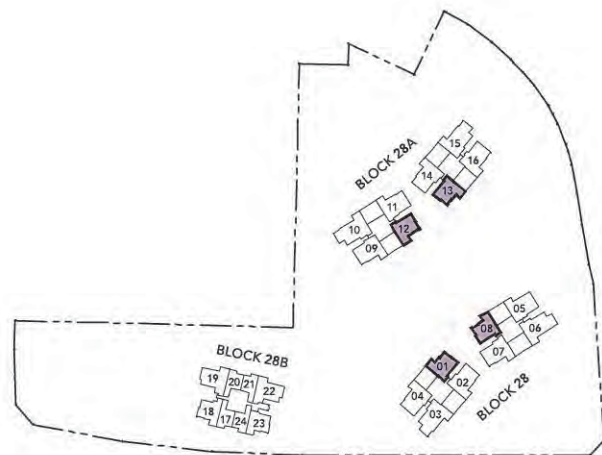


Plans are subject to any amendment as may be approved by the relevant authorities. All floor areas are approximate and are subject to final survey.

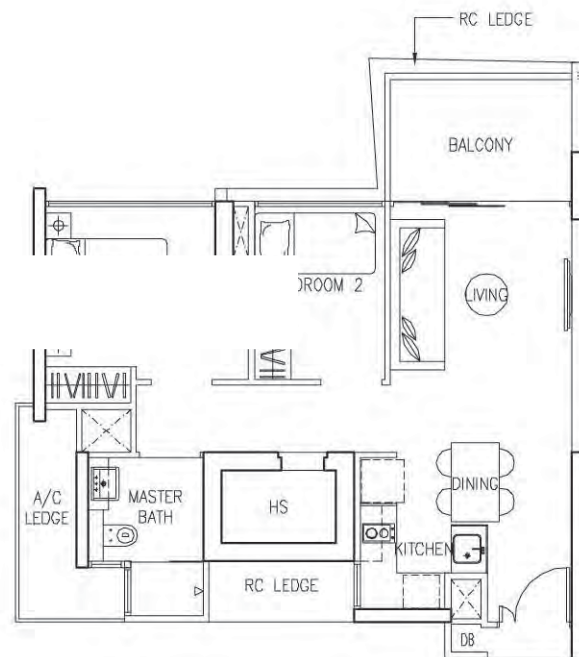
2-BEDROOM - TYPE B4

66 sq m / 710 sq ft

UNIT (MIRROR)		UNIT		UNIT		UNIT (MIRROR)	
#03-01	#21-01	#03-08	#21-08	#03-12	#21-12	#03-13	#21-13
#05-01	#23-01	#05-08	#23-08	#05-12	#23-12	#05-13	#23-13
#07-01	#25-01	#07-08	#25-08	#07-12	#25-12	#07-13	#25-13
#09-01	#27-01	#09-08	#27-08	#09-12	#27-12	#09-13	#27-13
#11-01	#29-01	#11-08	#29-08	#11-12	#29-12	#11-13	#29-13
#13-01	#31-01	#13-08	#31-08	#13-12	#31-12	#13-13	#31-13
#15-01	#33-01	#15-08	#33-08	#15-12	#33-12	#15-13	#33-13
#17-01	#35-01	#17-08	#35-08	#17-12	#35-12	#17-13	#35-13
#19-01		#19-08		#19-12		#19-13	



 KEY PLAN (NOT TO SCALE)



Plans are subject to any amendment as may be approved by the relevant authorities. All floor areas are approximate and are subject to final survey.