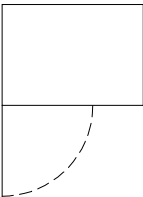


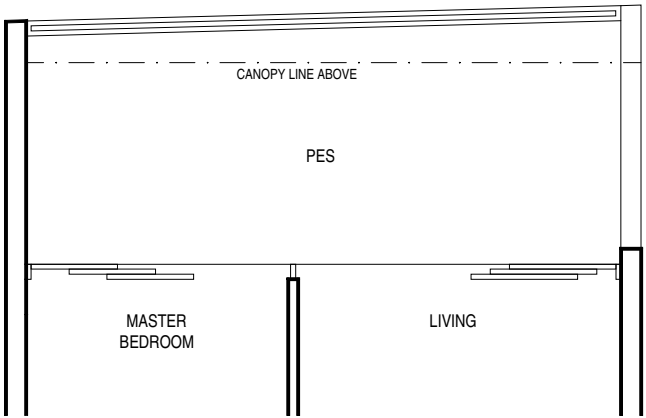
TYPE A1 (PES)
1 BEDROOM

51 sq.m. / 549 sq.ft.

#04-01



unit #04-01: including air-con condensers
of 1 sq.m./ 11 sq.ft.
accessory lot located
on 3rd floor podium carpark

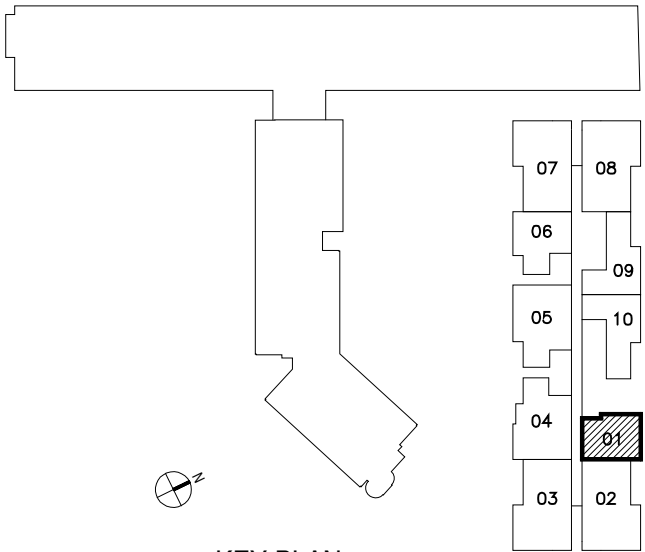
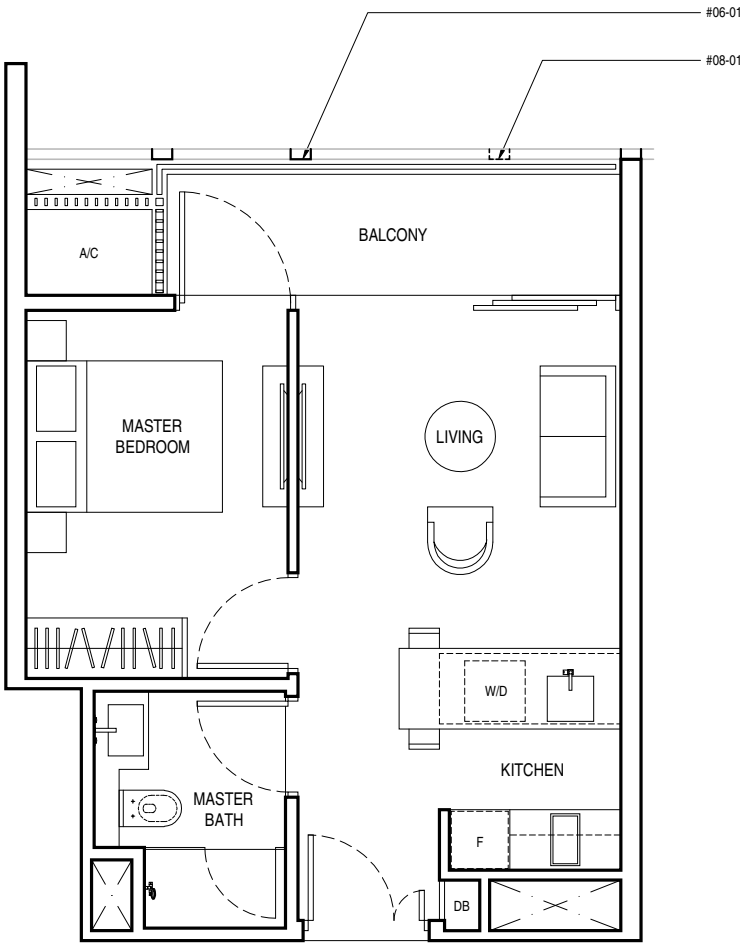


TYPE A1
1 BEDROOM

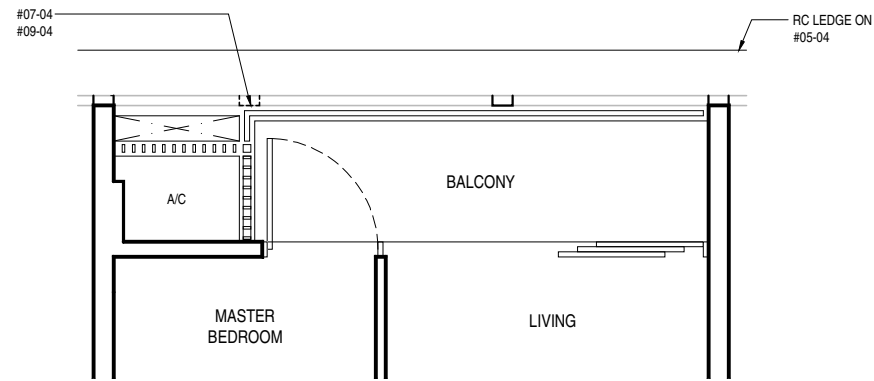
43 sq.m. / 463 sq.ft.

#06-01

#08-01



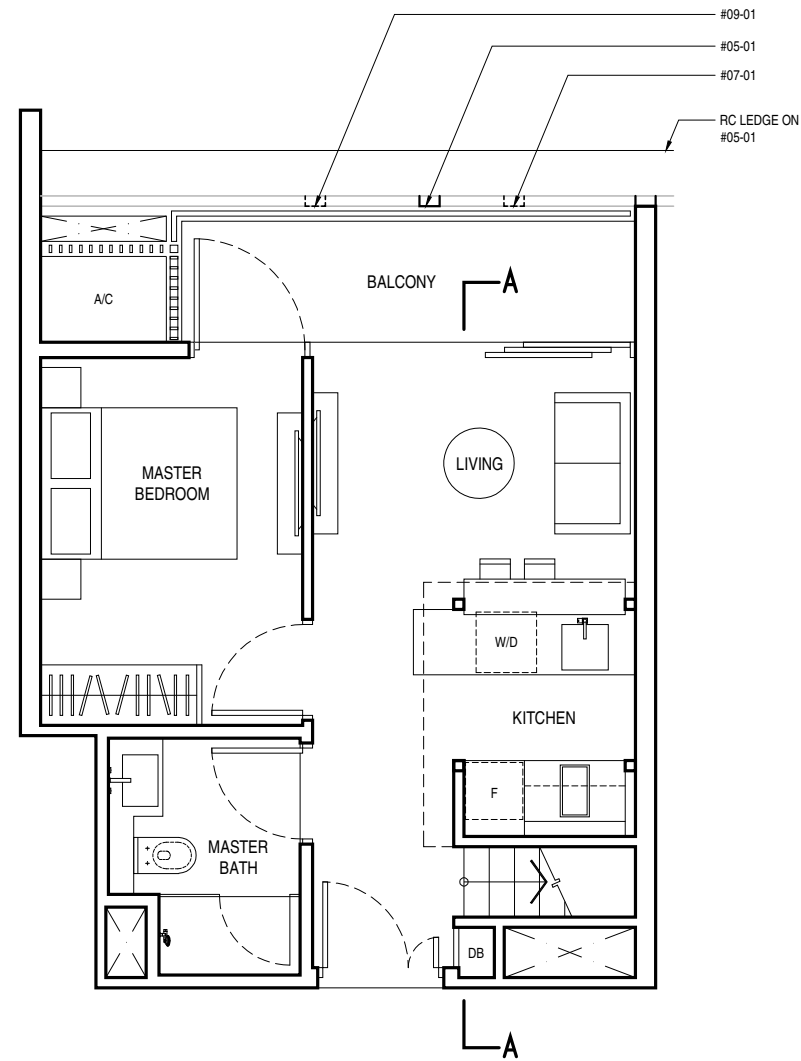
KEY PLAN



**TYPE A1b
1 BEDROOM**

43 sq.m. / 463 sq.ft.

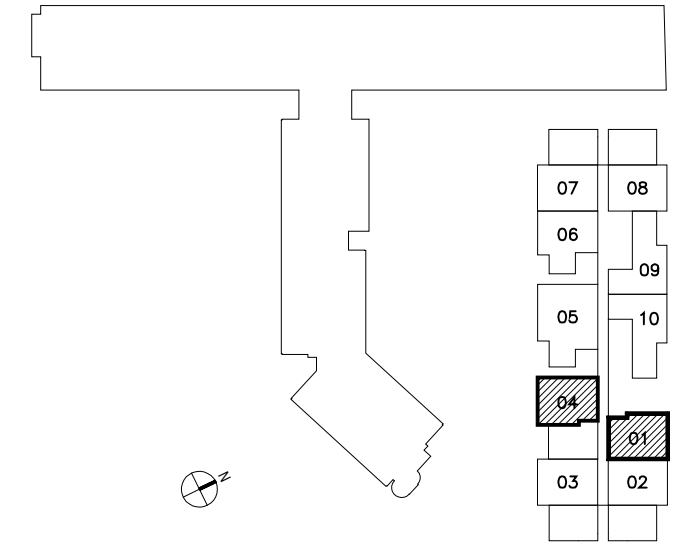
#05-04
#07-04
#09-04



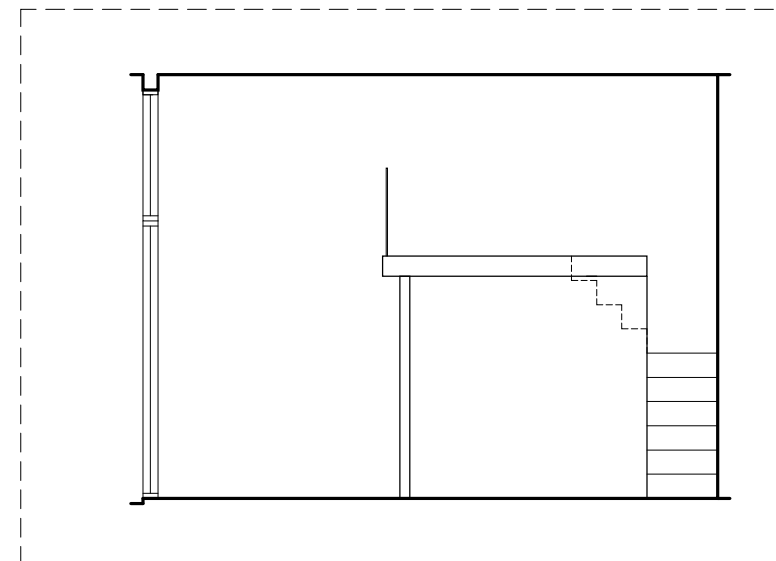
**TYPE A1b
1 BEDROOM**

43 sq.m. / 463 sq.ft.

#05-01
#07-01
#09-01

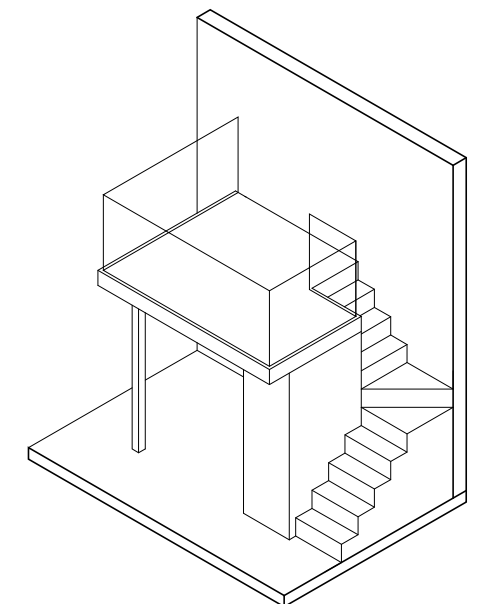


KEY PLAN

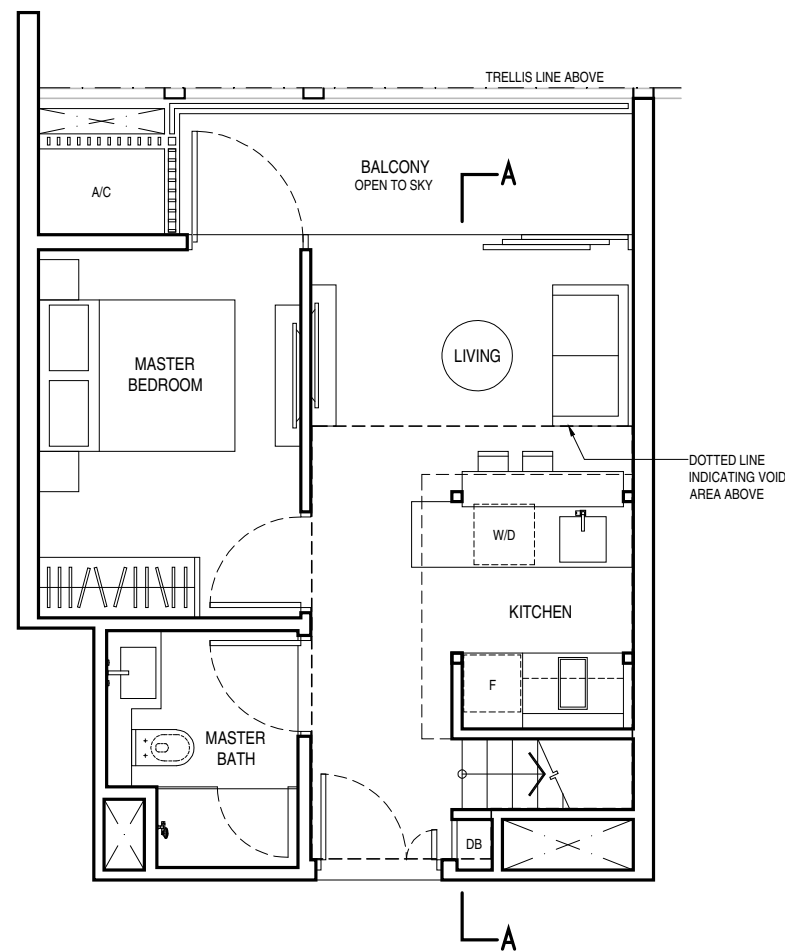


PART SECTION A-A
FLOOR TO FLOOR 4.20m

TYPE A1b



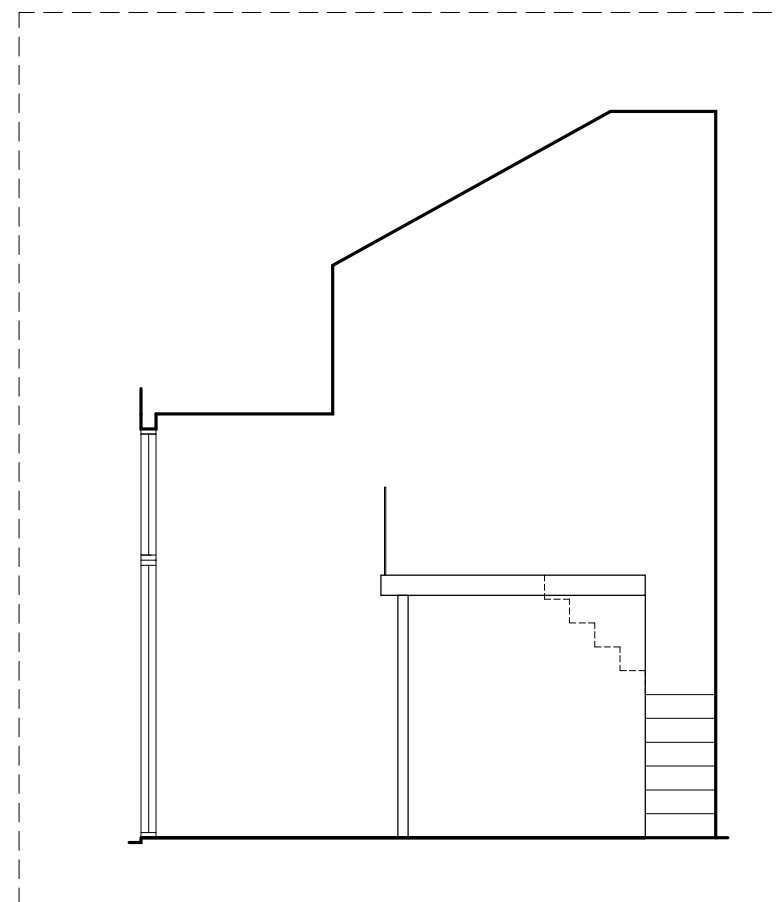
**ISOMETRIC VIEW OF
FURNITURE DECK**



**TYPE A1c
1 BEDROOM**

57 sq.m. / 614 sq.ft. (including void area of 14 sq.m./151 sq.ft. above kitchen)

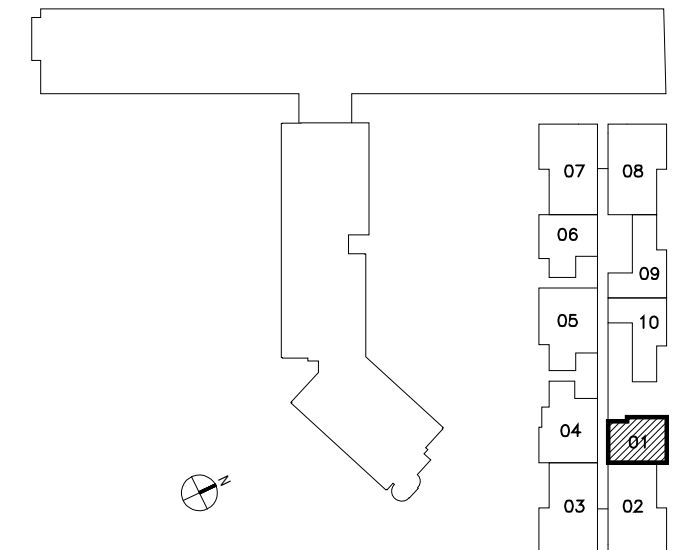
#10-01



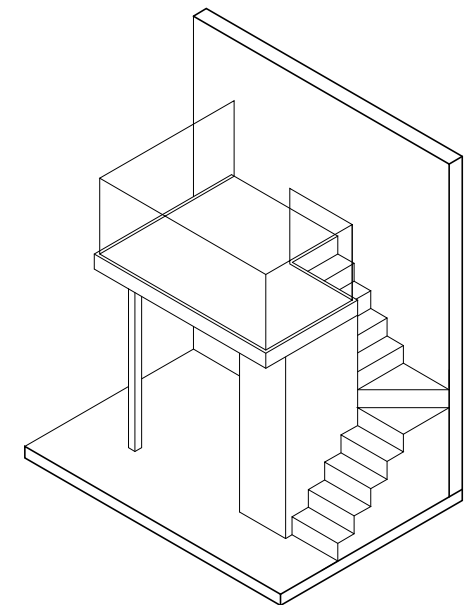
PART SECTION A-A

FLOOR TO ROOF VARIES FROM 4.20m TO 7.20m

TYPE A1c



KEY PLAN

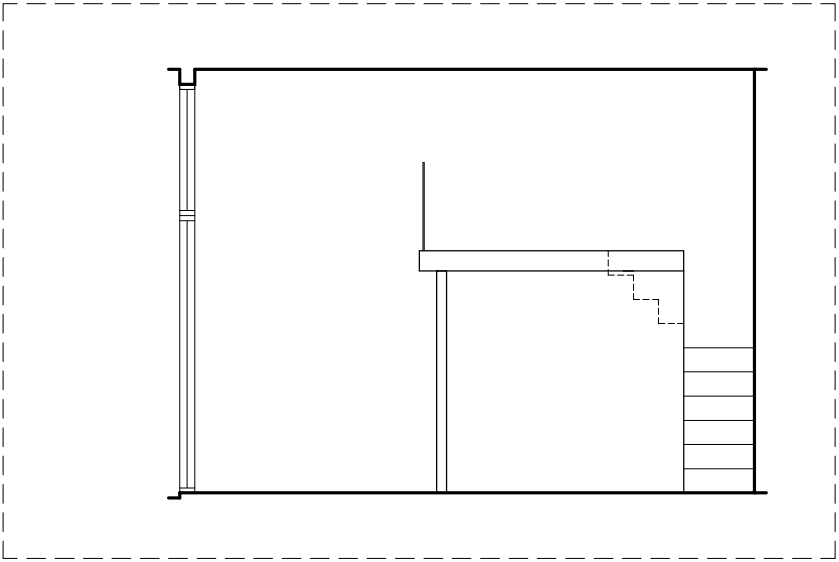
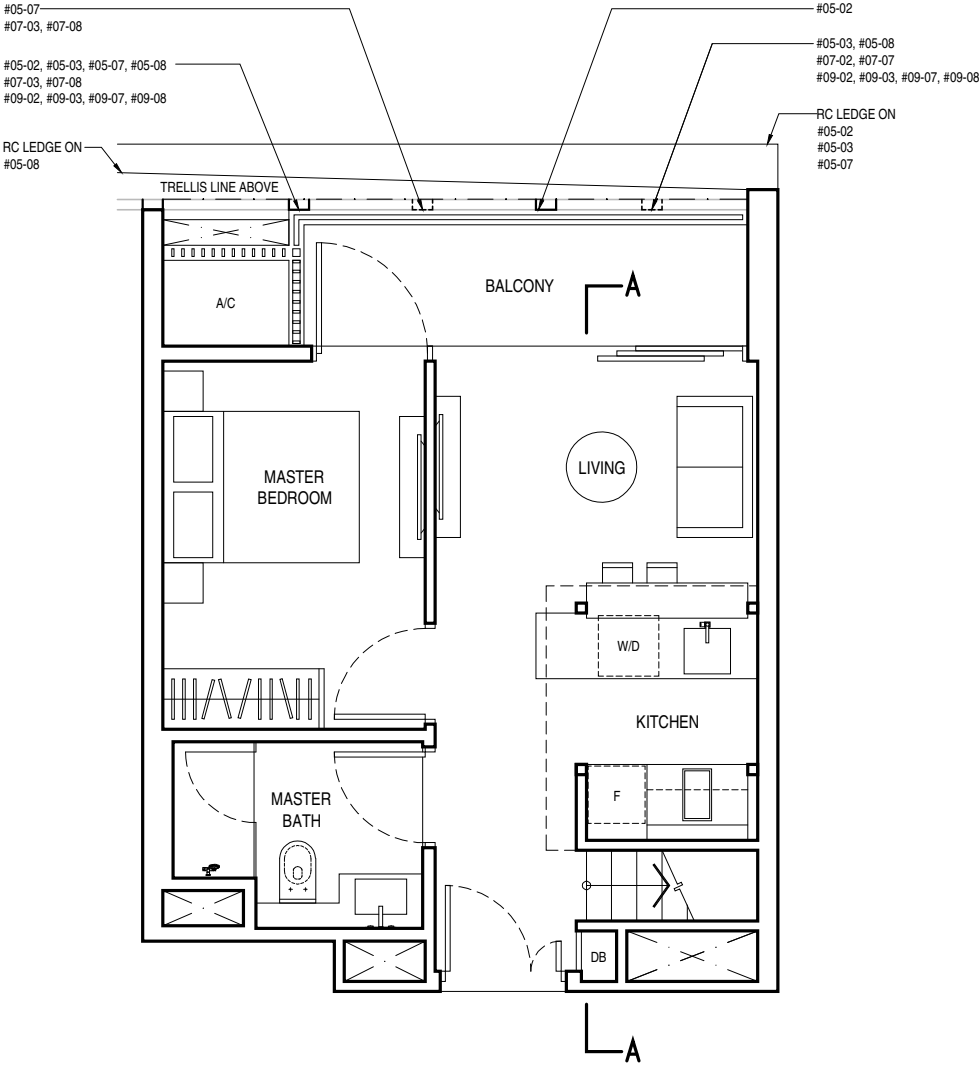


**ISOMETRIC VIEW OF
FURNITURE DECK**

TYPE A2b
1 BEDROOM

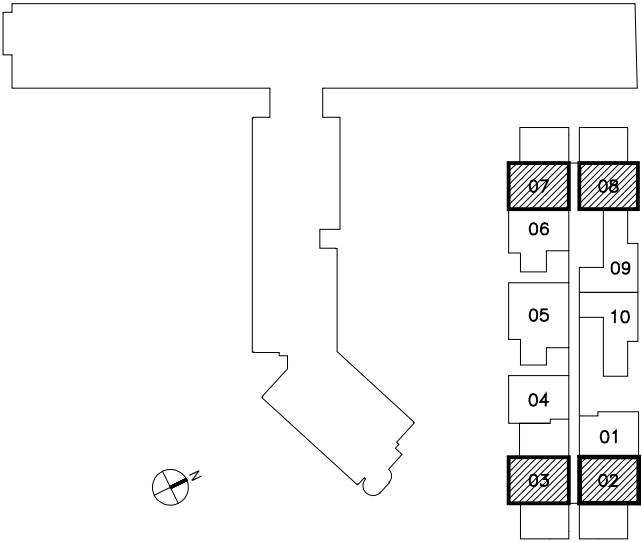
43 sq.m. / 463 sq.ft.

- #05-02 #05-03 (MIRROR)
- #05-07 #05-08 (MIRROR)
- #07-02 #07-03 (MIRROR)
- #07-07 #07-08 (MIRROR)
- #09-02 #09-03 (MIRROR)
- #09-07 #09-08 (MIRROR)

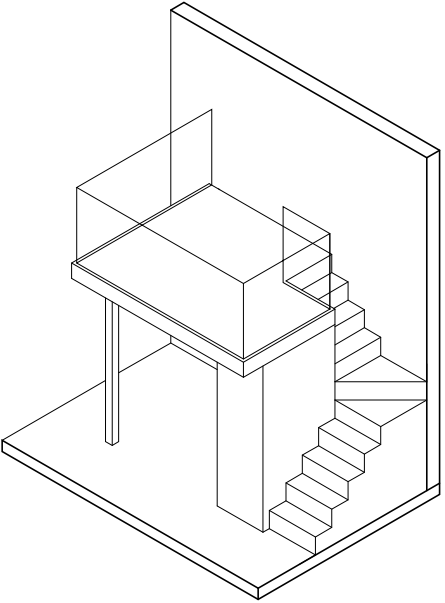


PART SECTION A-A
FLOOR TO FLOOR 4.20m

TYPE A2b



KEY PLAN

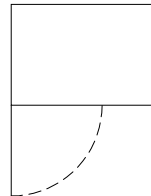


ISOMETRIC VIEW OF
FURNITURE DECK

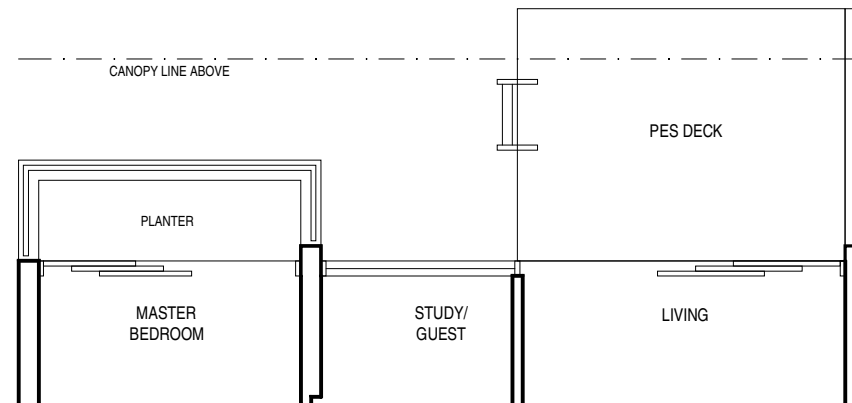
TYPE B1 (PES)
1 BEDROOM + STUDY / GUEST

54 sq.m. / 581 sq.ft.

#04-06



unit #04-06: including air-con condensers
of 1 sq.m. / 11 sq.ft.
accessory lot located
on 3rd floor podium carpark

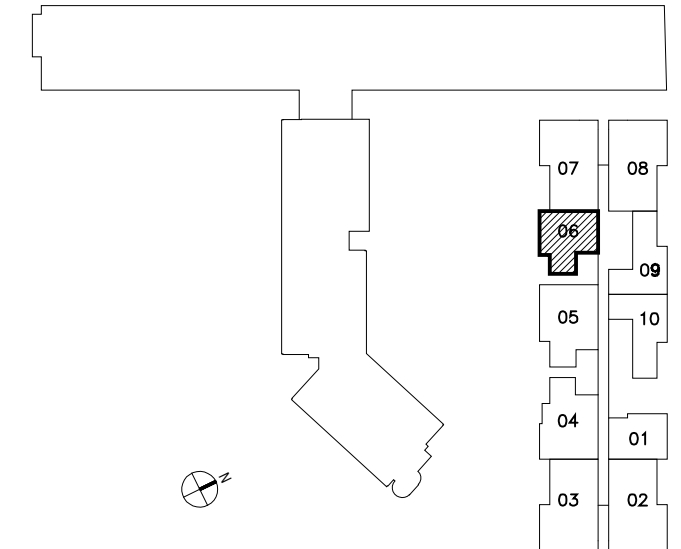
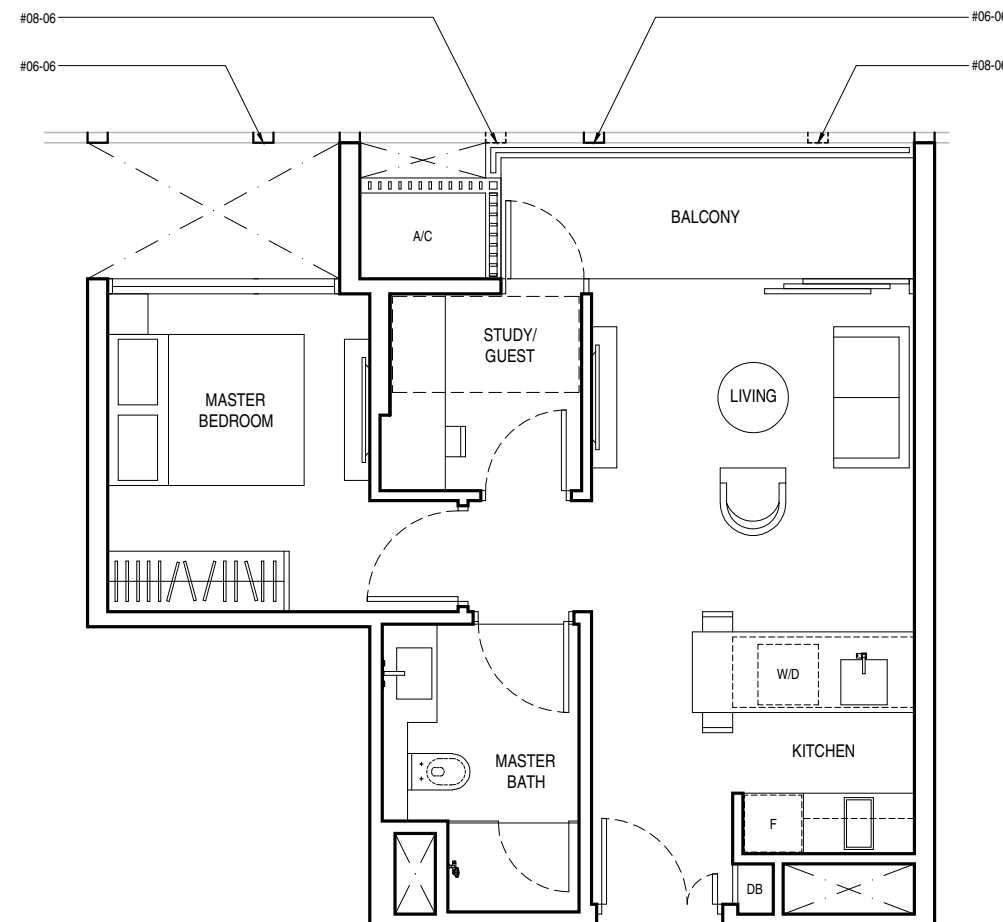


TYPE B1
1 BEDROOM + STUDY / GUEST

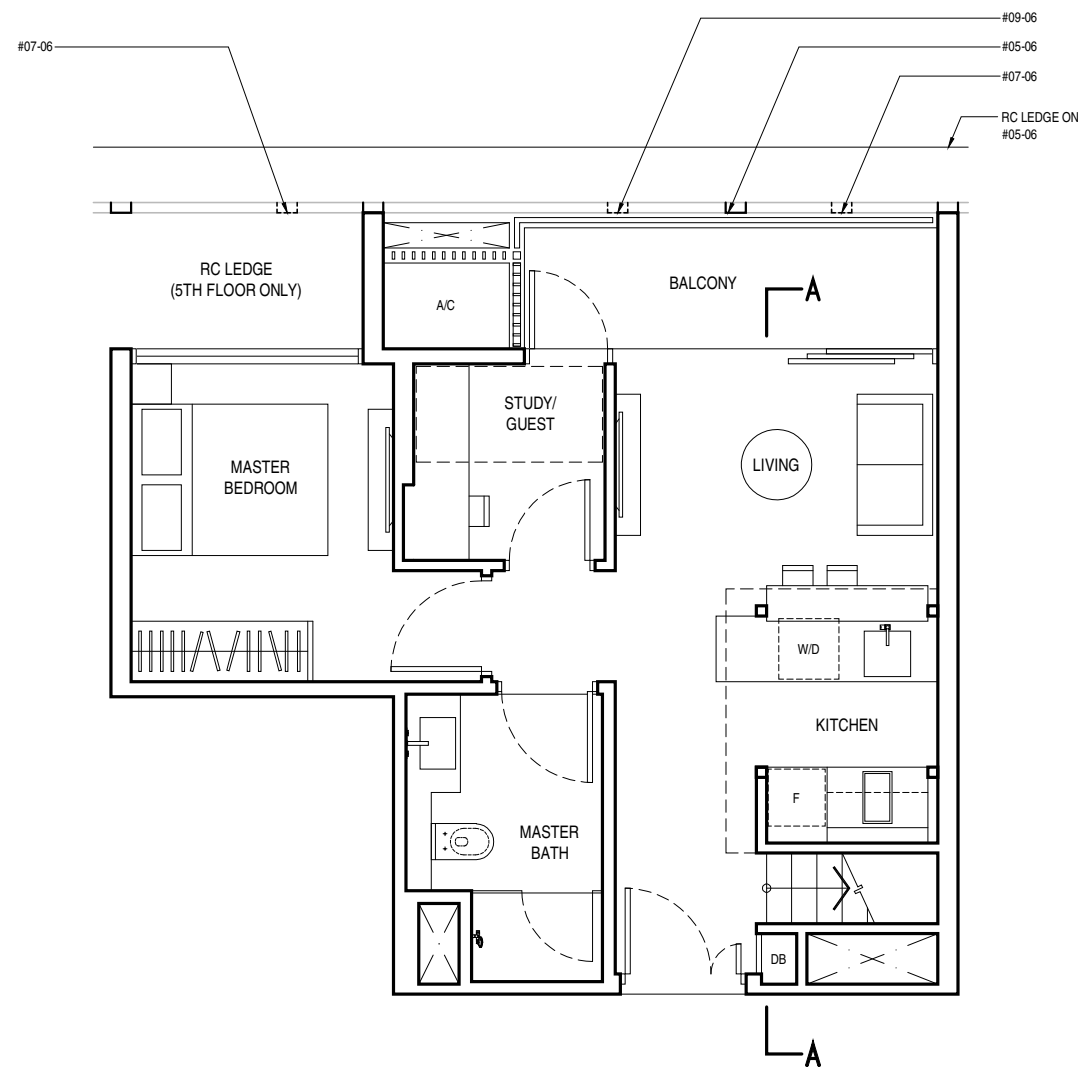
49 sq.m. / 527 sq.ft.

#06-06

#08-06

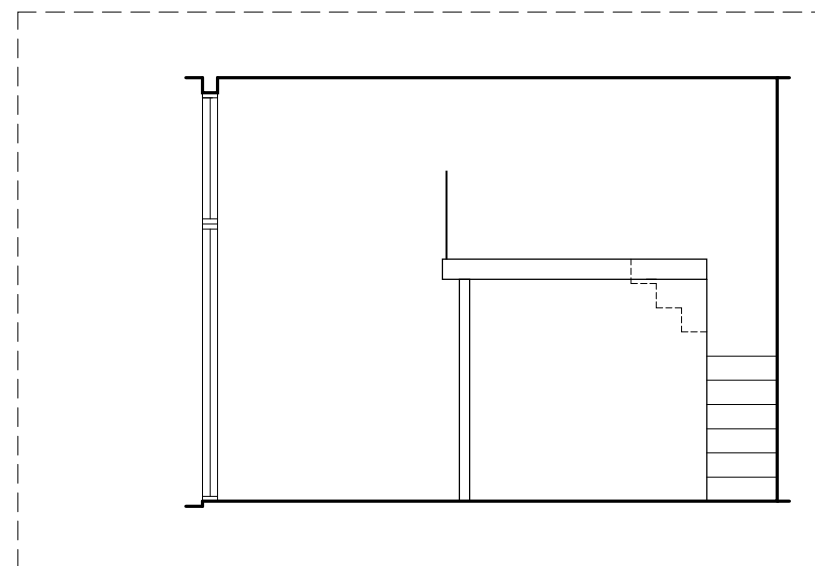


KEY PLAN



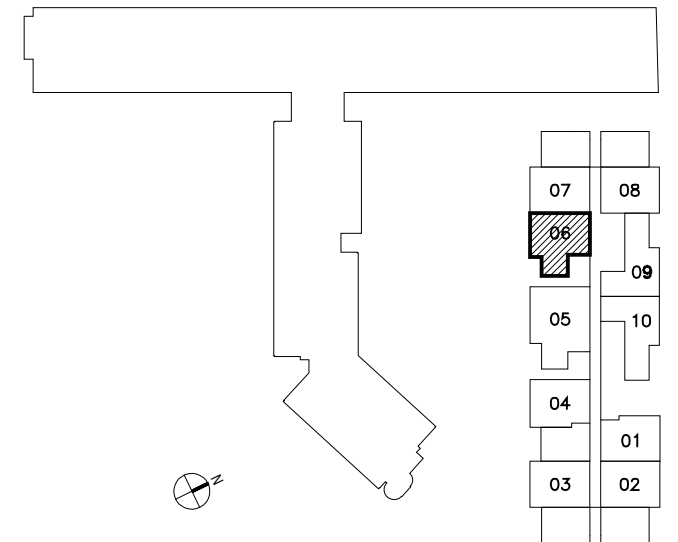
TYPE B1b
1 BEDROOM + STUDY / GUEST
 49 sq.m. / 527 sq.ft.

#05-06
 #07-06
 #09-06

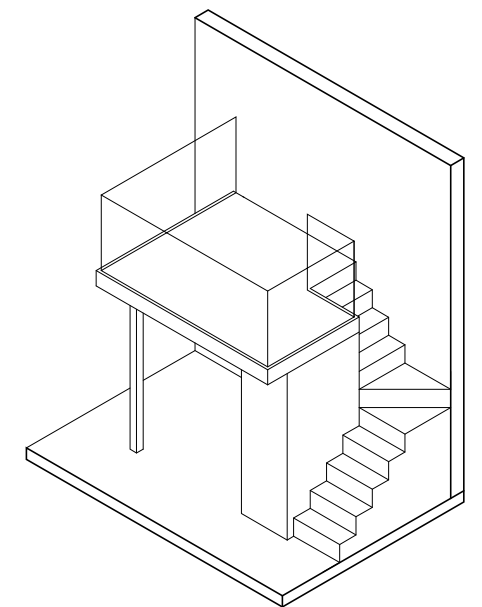


PART SECTION A-A
 FLOOR TO FLOOR 4.20m

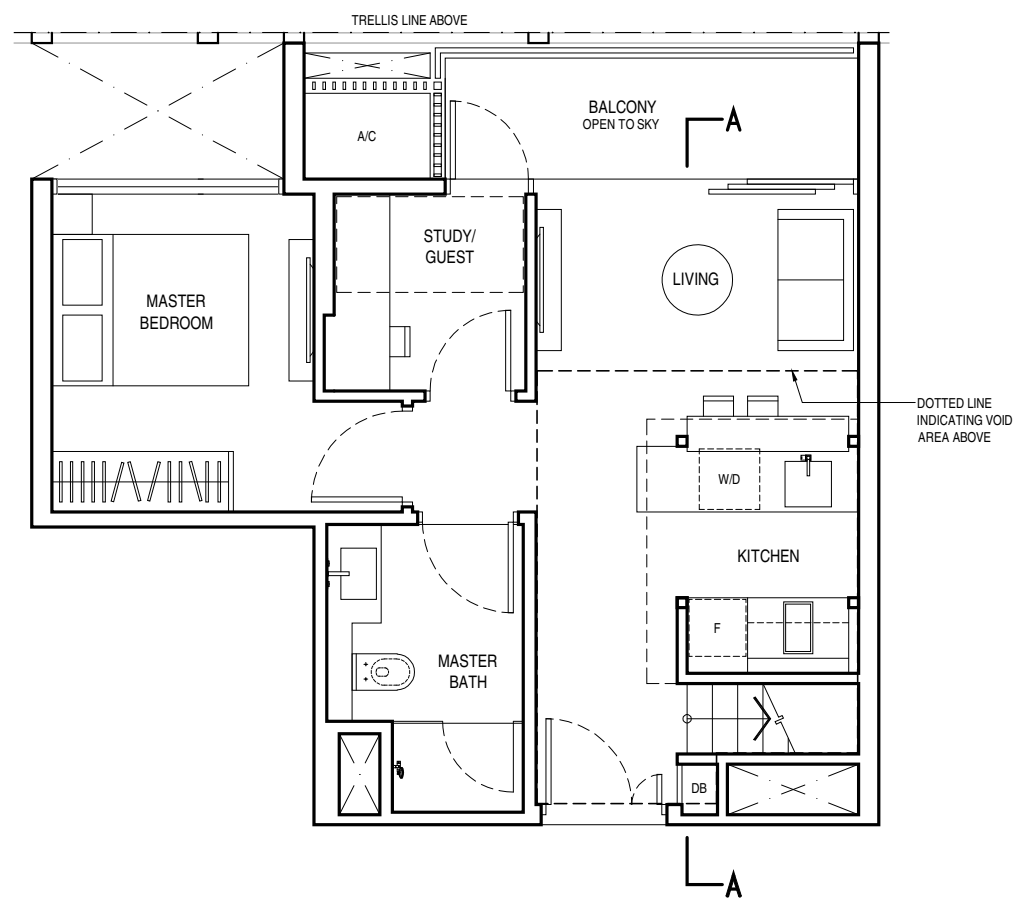
TYPE B1b



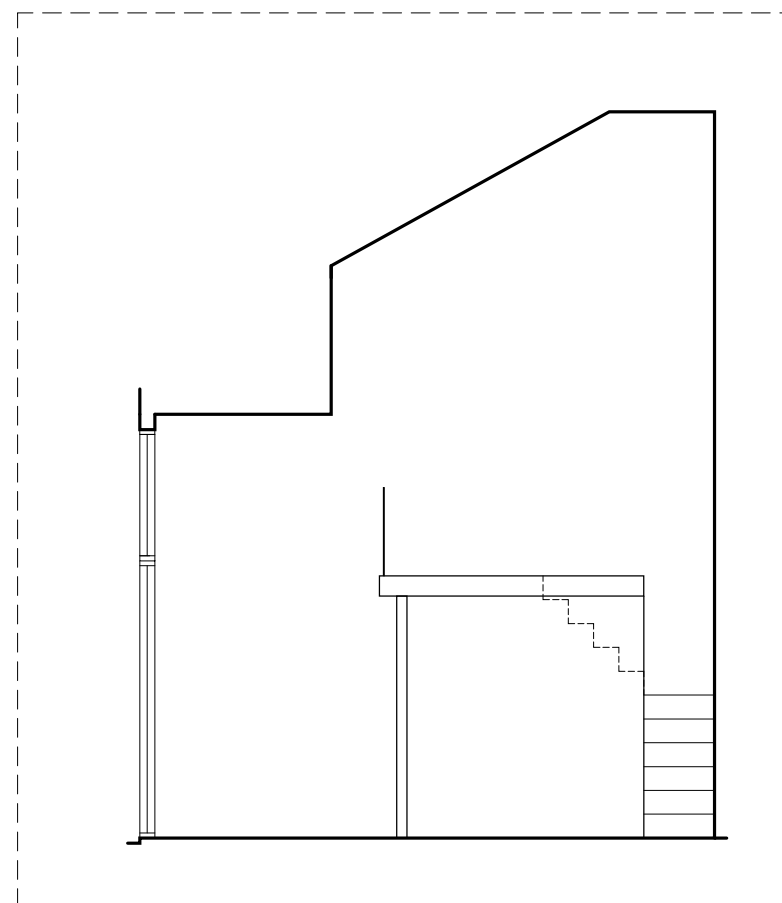
KEY PLAN



ISOMETRIC VIEW OF FURNITURE DECK

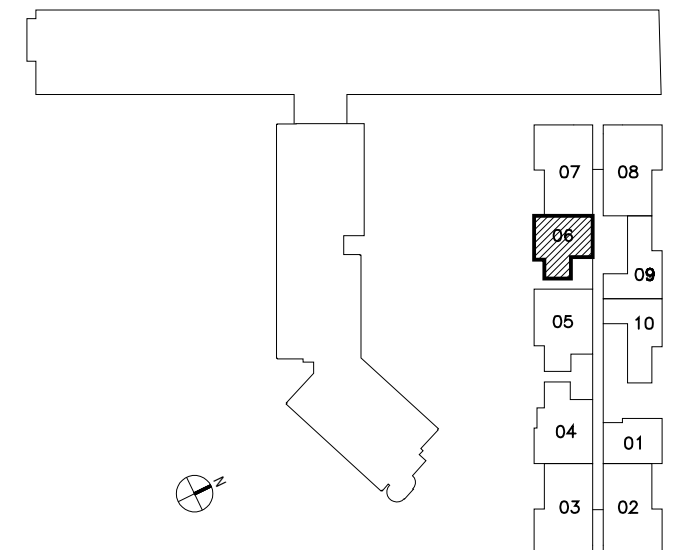


TYPE B1c
1 BEDROOM + STUDY / GUEST
 63 sq.m. / 678 sq.ft. (including void area of 14 sq.m./151 sq.ft. above kitchen)
 #10-06

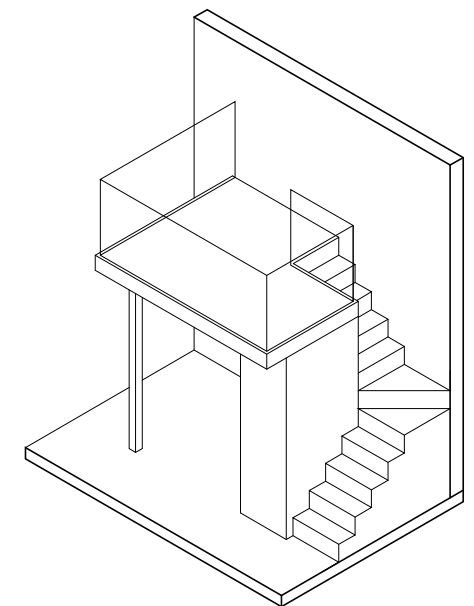


PART SECTION A-A
 FLOOR TO ROOF VARIES FROM 4.20m TO 7.20m

TYPE B1c



KEY PLAN

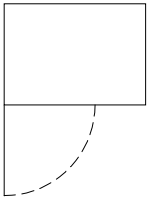


ISOMETRIC VIEW OF FURNITURE DECK

TYPE B2-2 (PES)
1 BEDROOM + STUDY / GUEST

69 sq.m. / 743 sq.ft.

#04-10 (MIRROR)

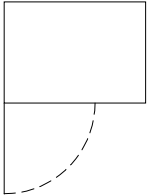


unit #04-10: including air-con condensers
of 1 sq.m./ 11 sq.ft.
accessory lot located
on 3rd floor podium carpark

TYPE B2-1 (PES)
1 BEDROOM + STUDY / GUEST

67 sq.m. / 721 sq.ft.

#04-09

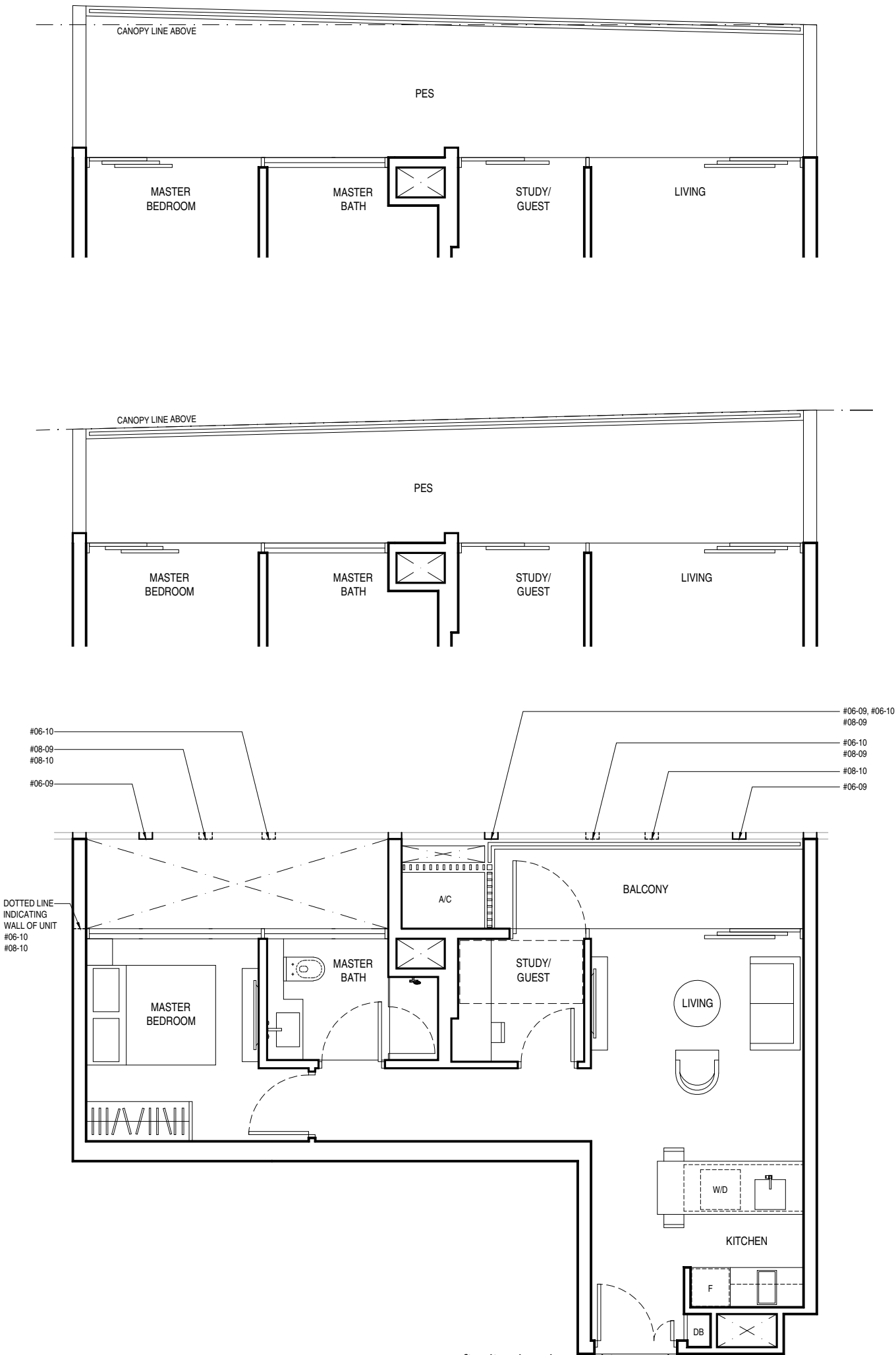


unit #04-09: including air-con condensers
of 1 sq.m./ 11 sq.ft.
accessory lot located
on 3rd floor podium carpark

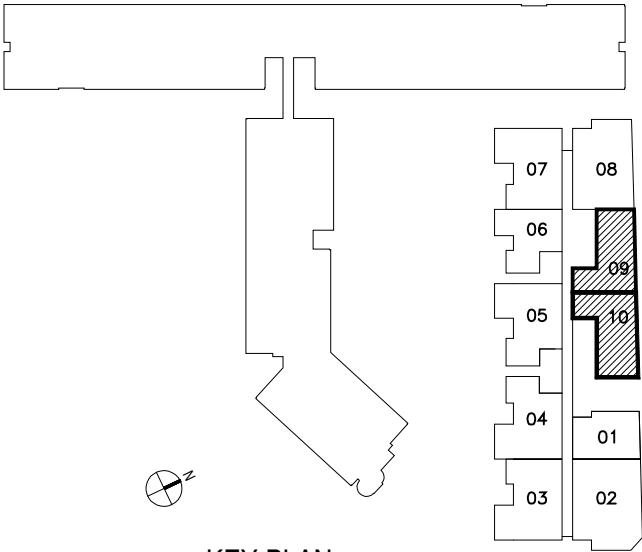
TYPE B2
1 BEDROOM + STUDY / GUEST

53 sq.m. / 570 sq.ft.

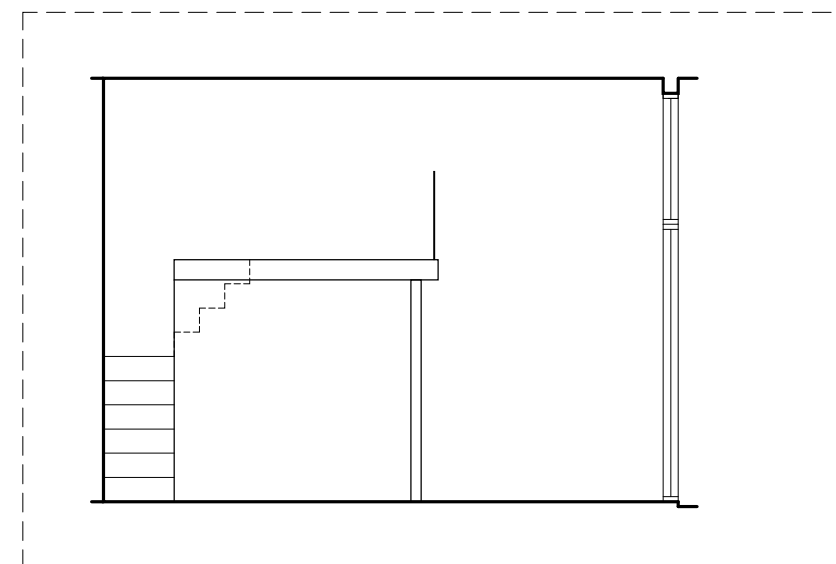
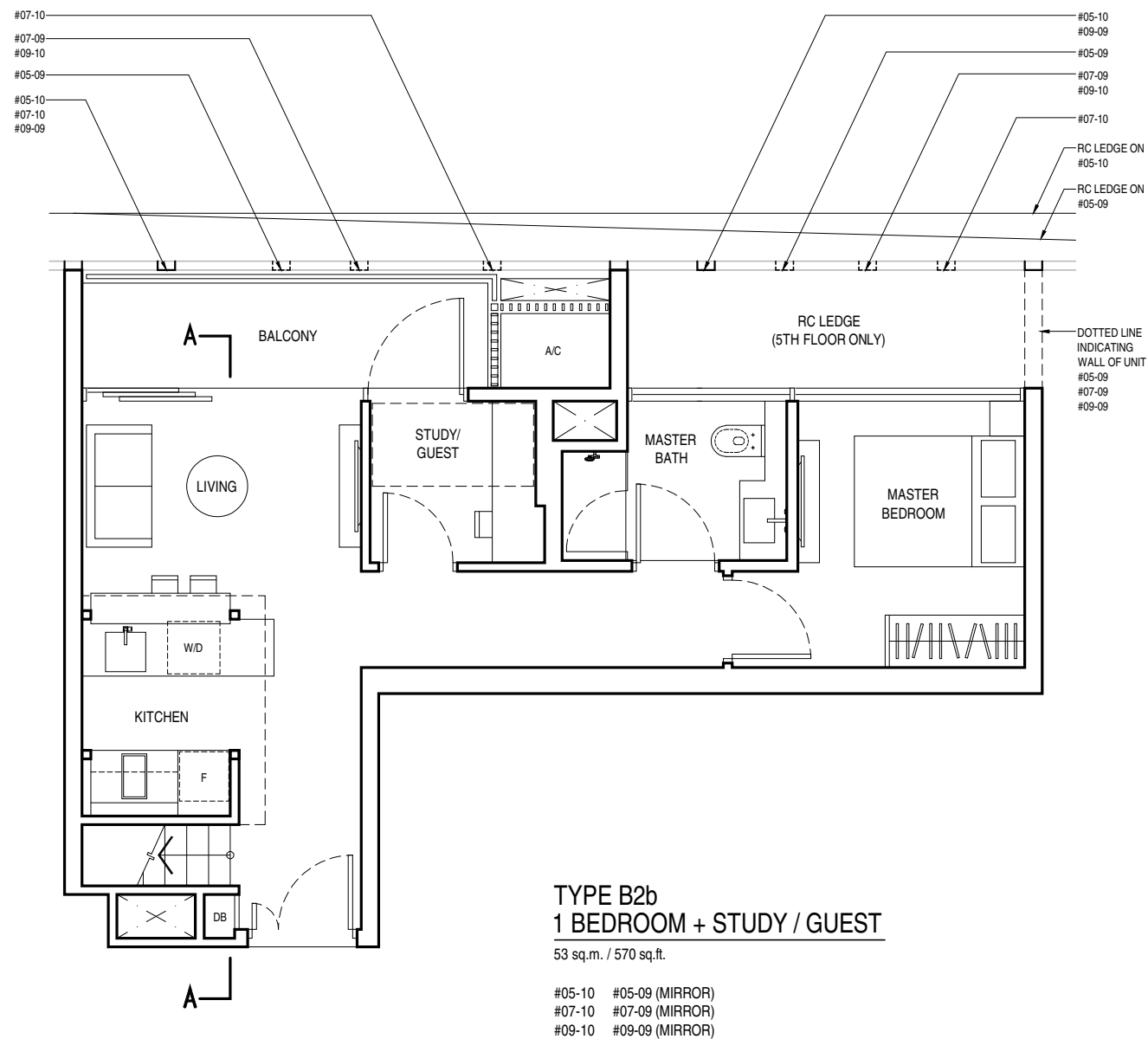
#06-09 #06-10 (MIRROR)
#08-09 #08-10 (MIRROR)



Areas are not finalized and are subject to change
Information herein is subject to change without prior notice
17 April 2012

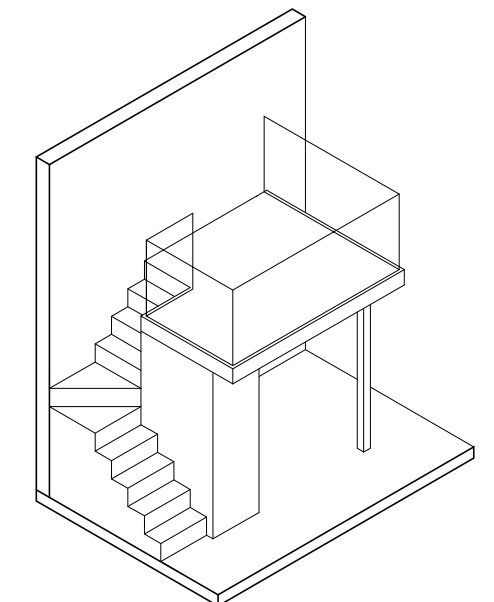


KEY PLAN

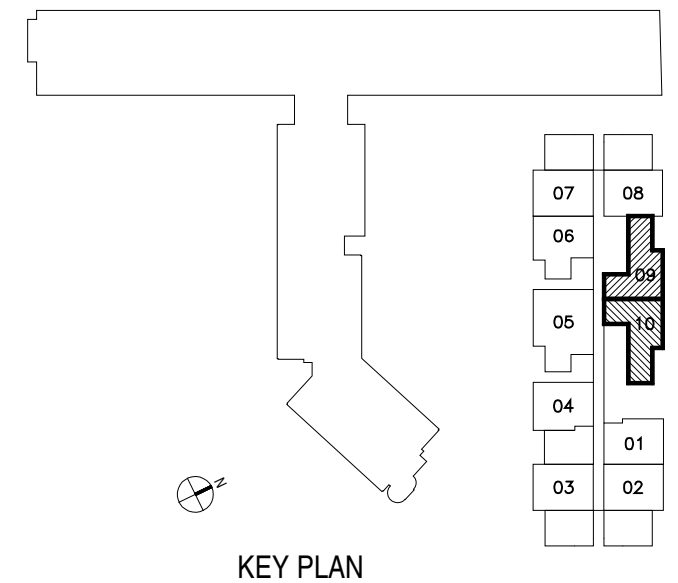


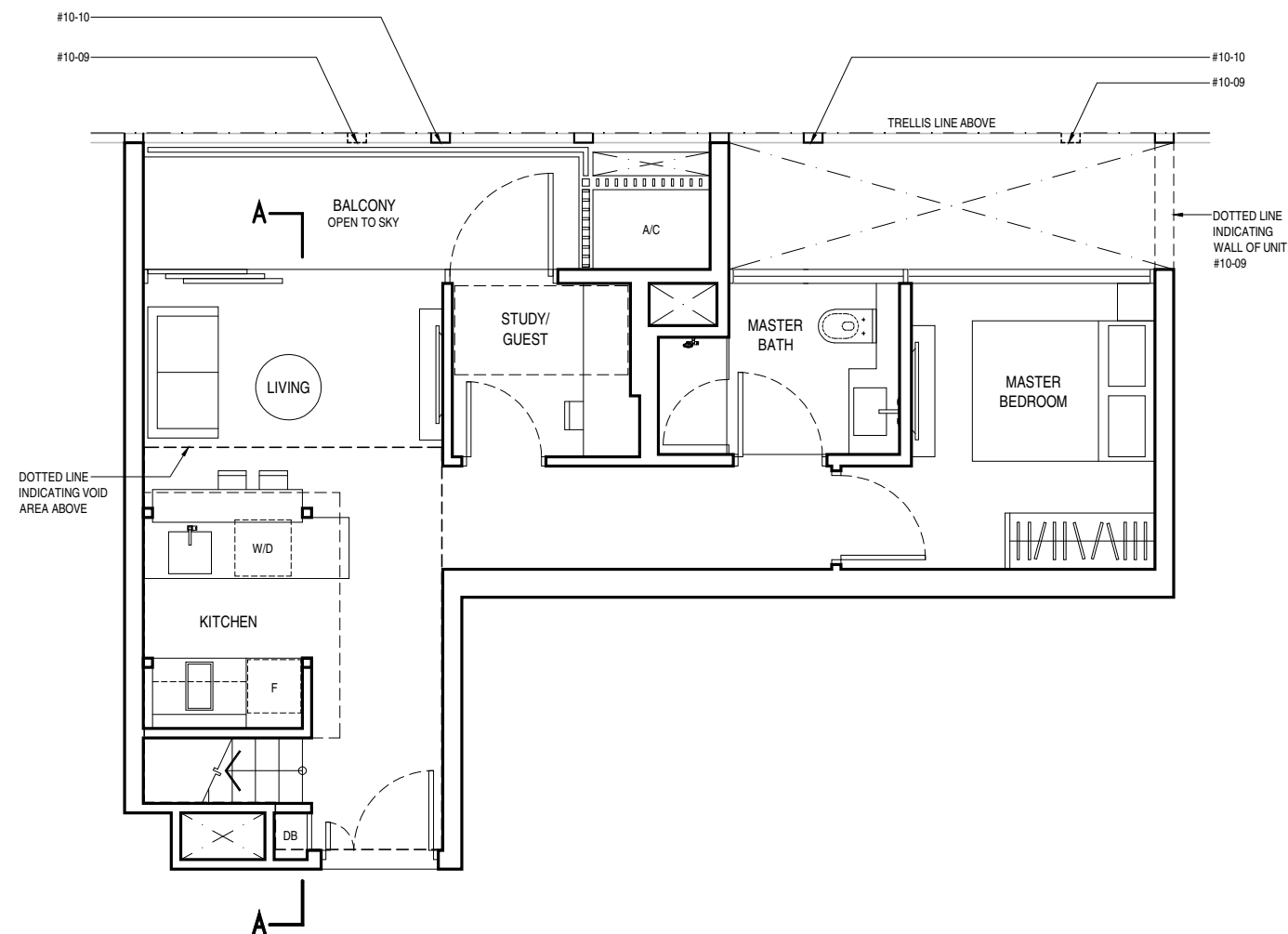
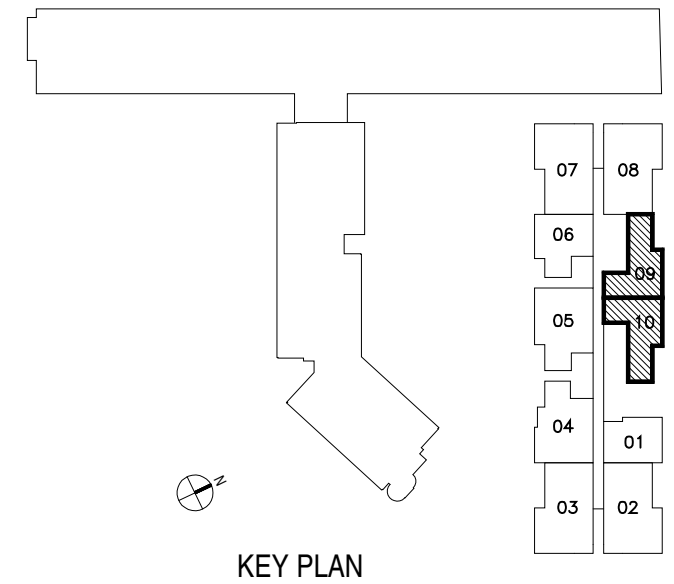
PART SECTION A-A
FLOOR TO FLOOR 4.20m

TYPE B2b

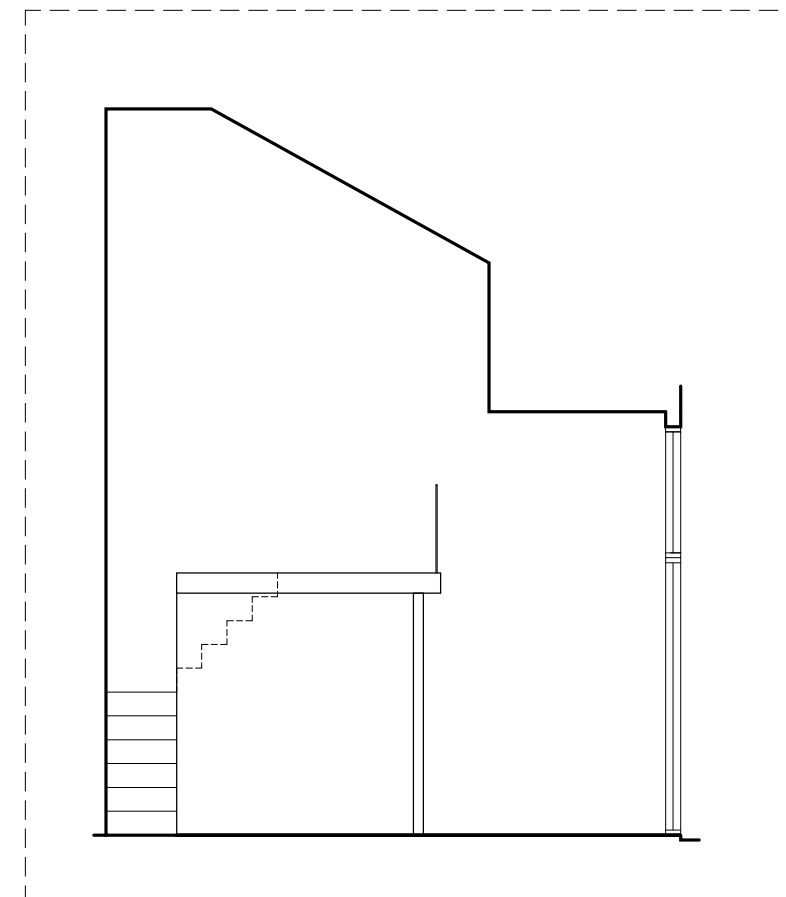


**ISOMETRIC VIEW OF
FURNITURE DECK**



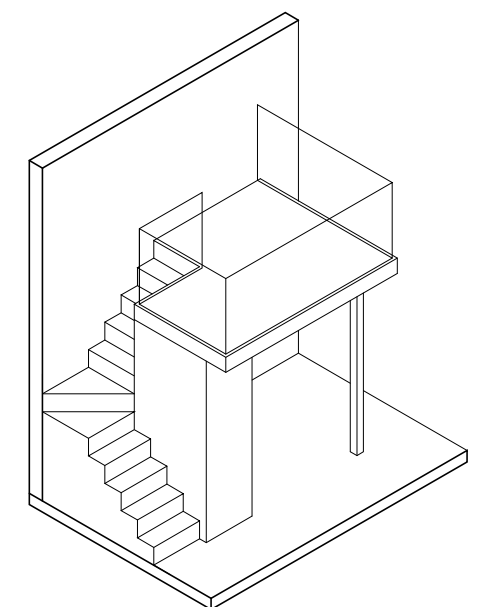


TYPE B2c
1 BEDROOM + STUDY / GUEST
 67 sq.m. / 721 sq.ft. (including void area of 14 sq.m./151 sq.ft.
 above kitchen)
 #10-10 #10-09 (MIRROR)

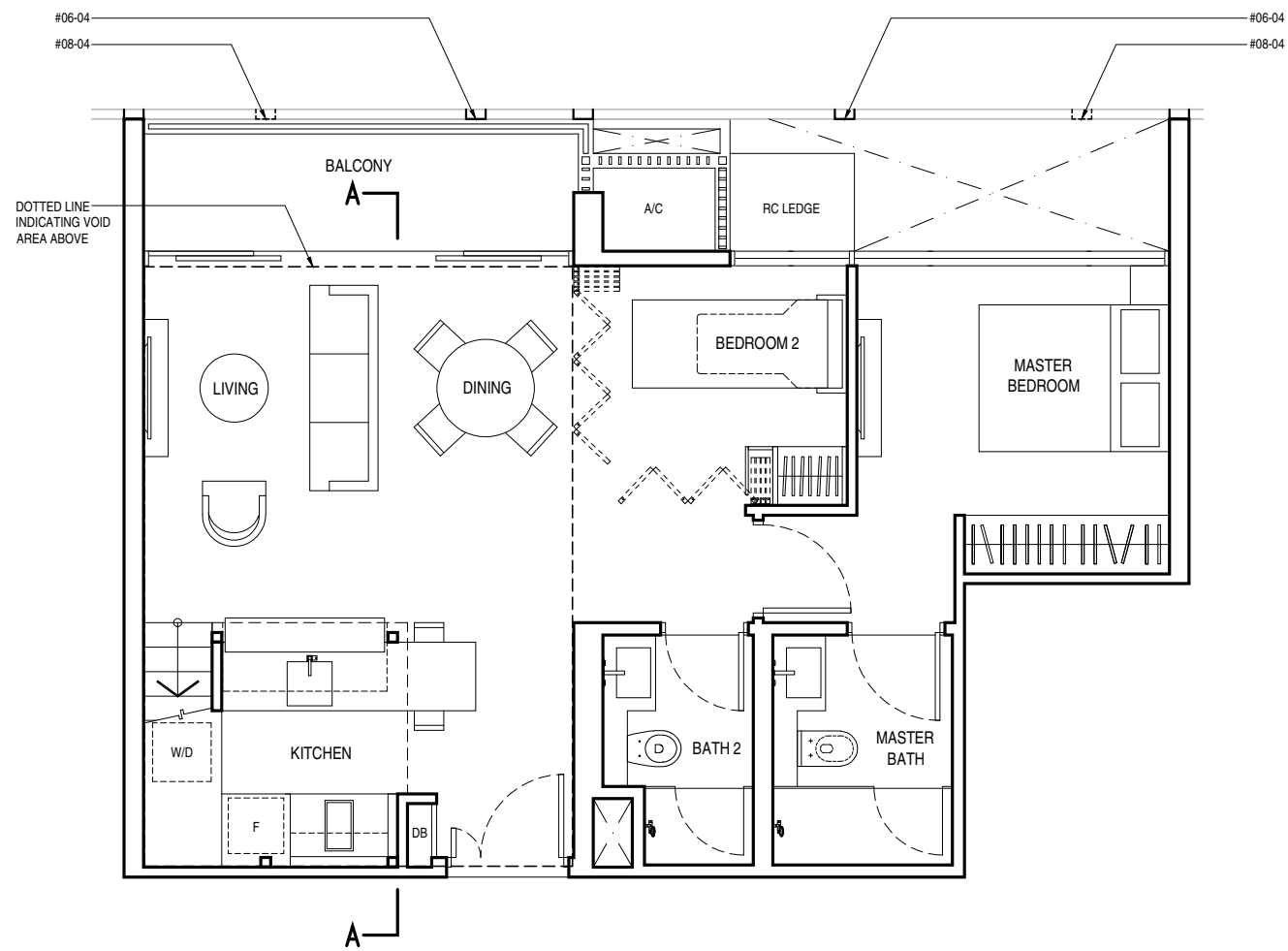


PART SECTION A-A
 FLOOR TO ROOF VARIES FROM 4.20m TO 7.20m

TYPE B2c



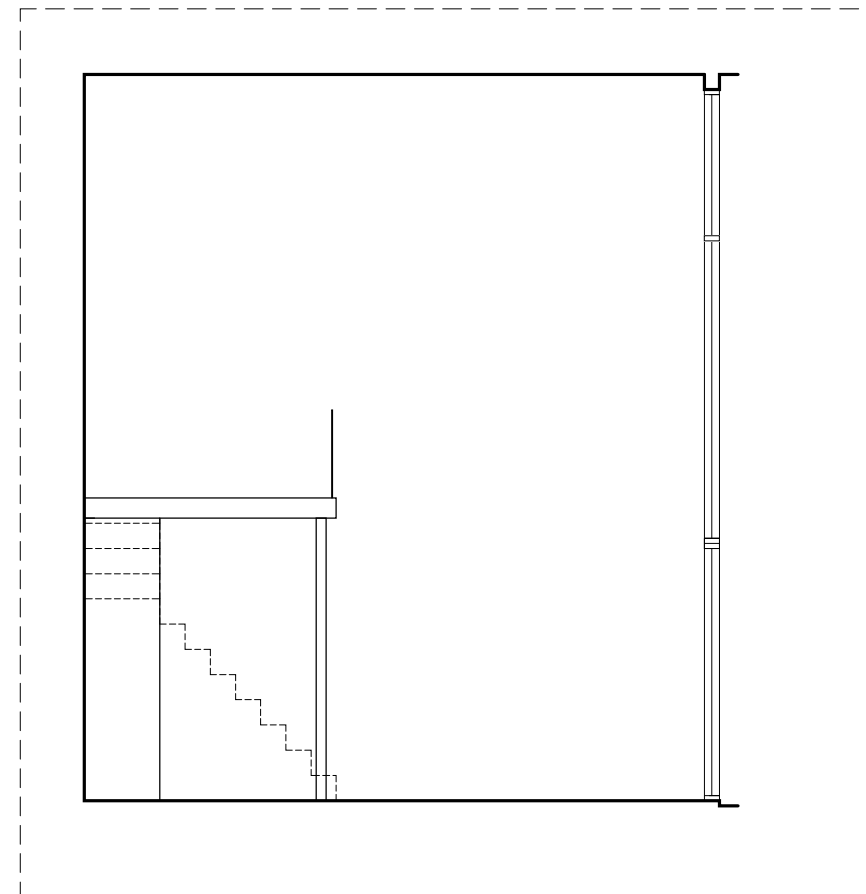
**ISOMETRIC VIEW OF
 FURNITURE DECK**



**TYPE C1a
2 BEDROOM**

97 sq.m. / 1,044 sq.ft. (including void area of 29 sq.m./312 sq.ft.
above living, dining and kitchen)

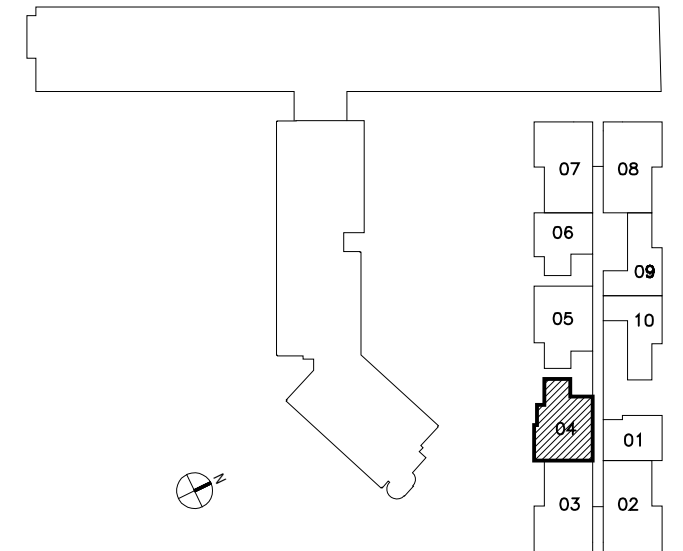
#06-04
#08-04



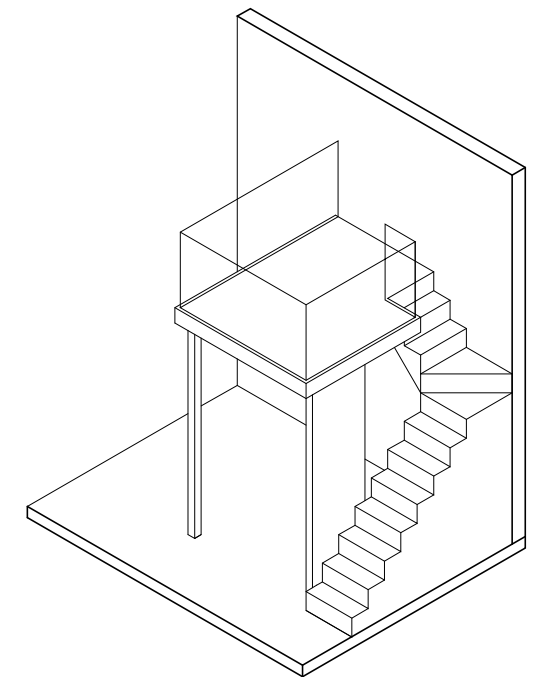
PART SECTION A-A

FLOOR TO FLOOR 7.20 m. ABOVE LIVING/
DINING AND KITCHEN

TYPE C1a



KEY PLAN

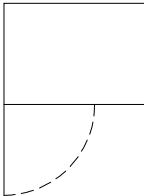


**ISOMETRIC VIEW OF
FURNITURE DECK**

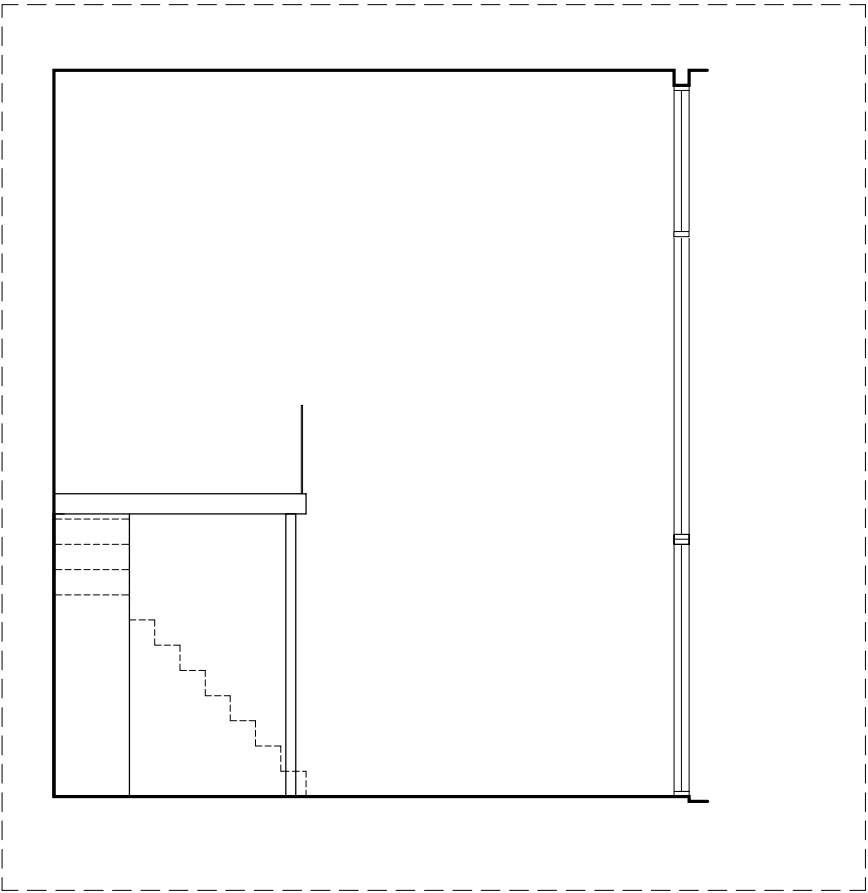
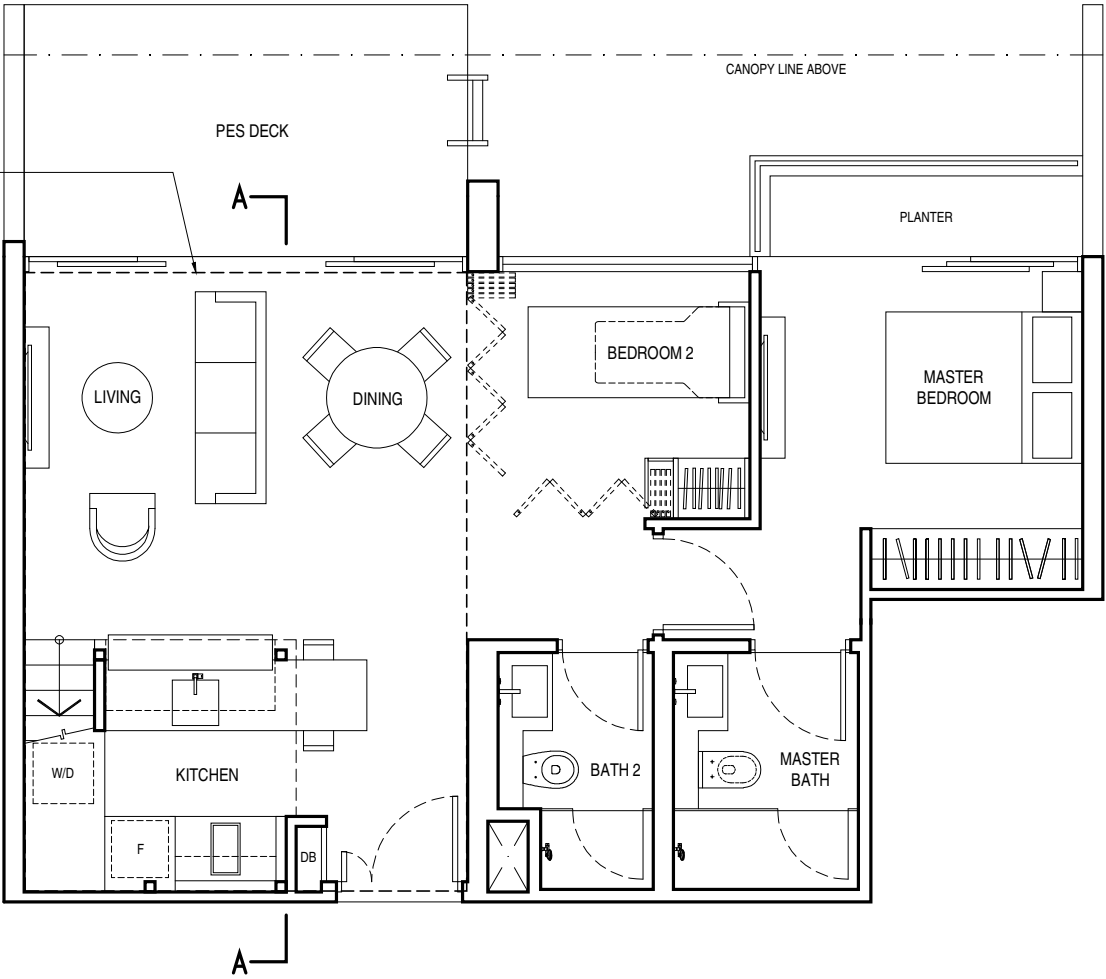
TYPE C1a (PES)
2 BEDROOM

105 sq.m. / 1,130 sq.ft. (including void area of 29 sq.m./312 sq.ft.
above living, dining and kitchen)

#04-04

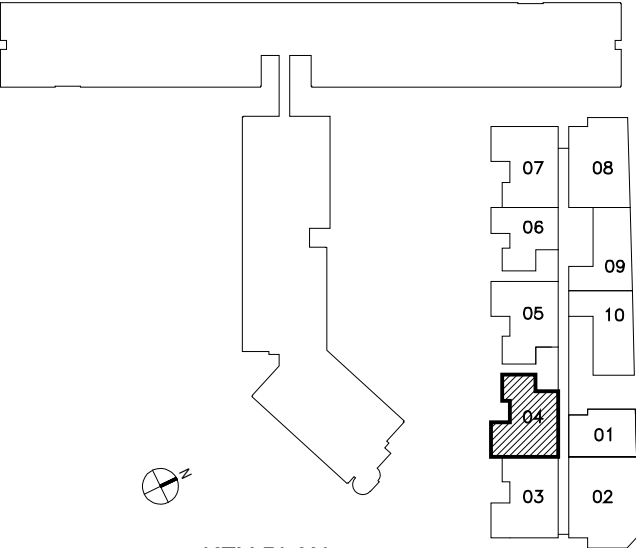


unit #04-04: including air-con condensers
of 1 sq.m./ 11 sq.ft.
accessory lot located
on 3rd floor podium carpark

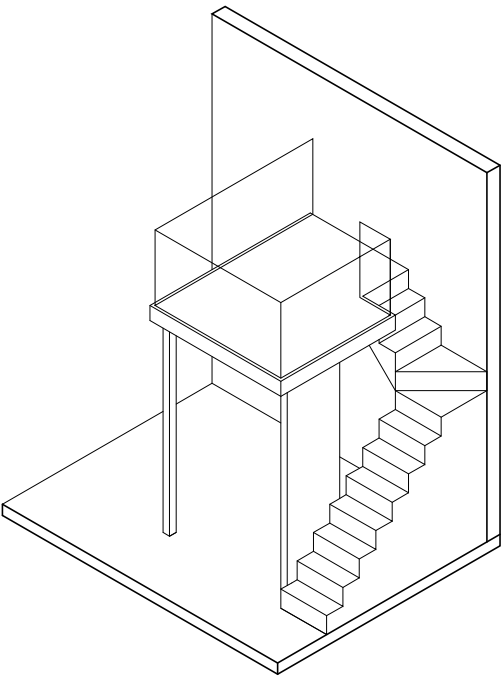


PART SECTION A-A
FLOOR TO FLOOR 7.20 m. ABOVE LIVING/
DINING AND KITCHEN

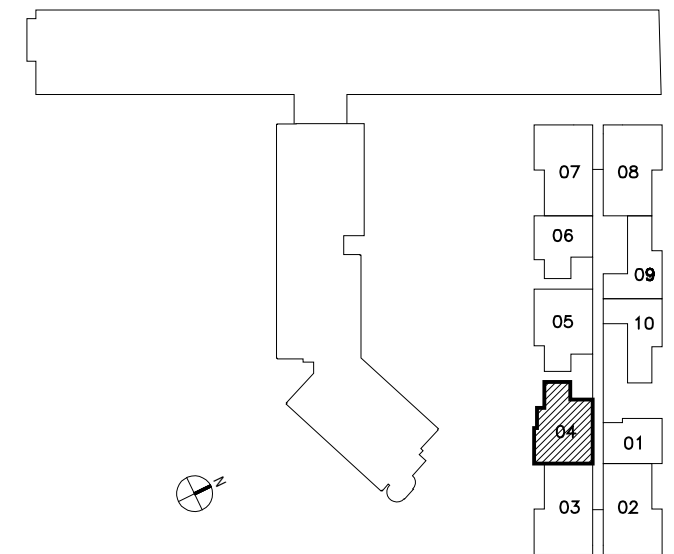
TYPE C1a (PES)



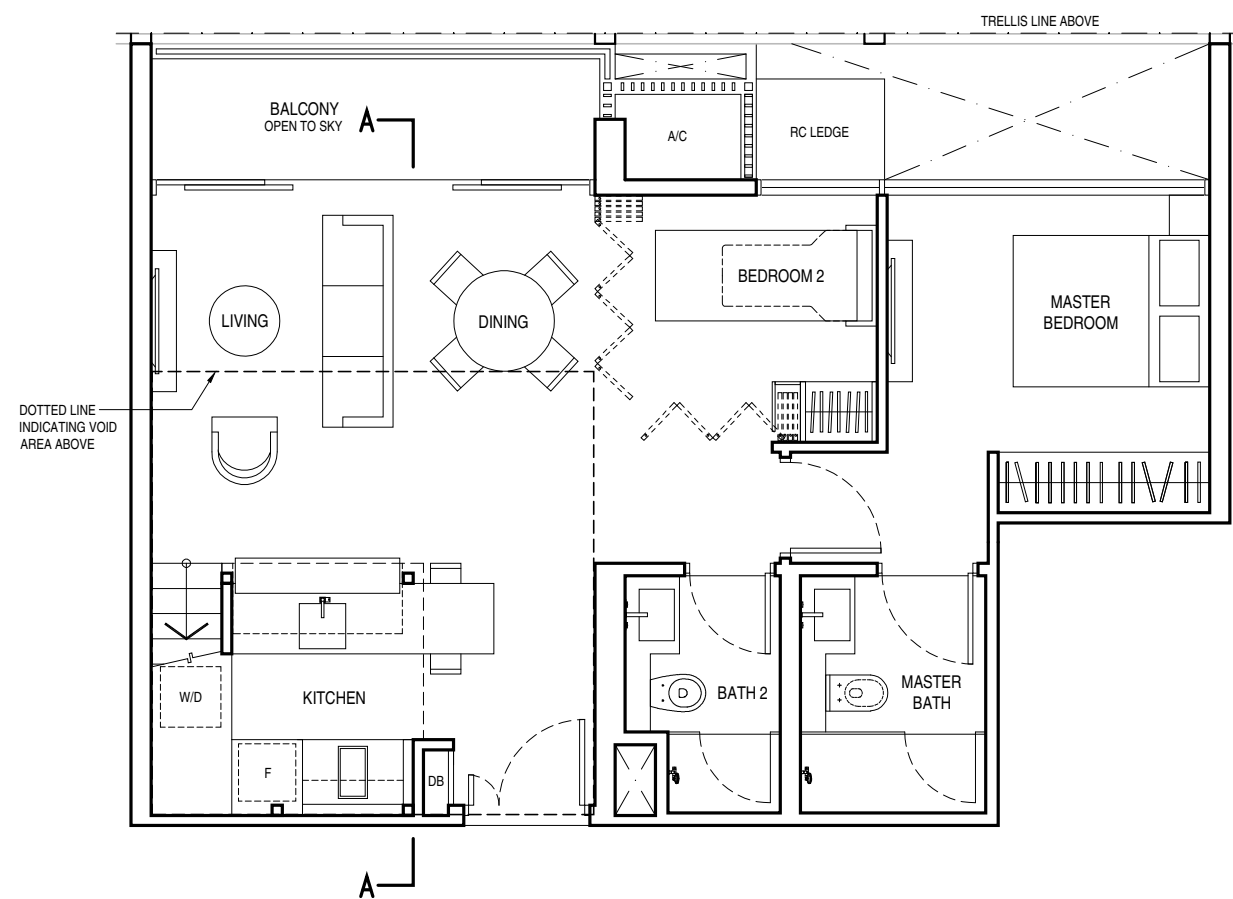
KEY PLAN



ISOMETRIC VIEW OF
FURNITURE DECK



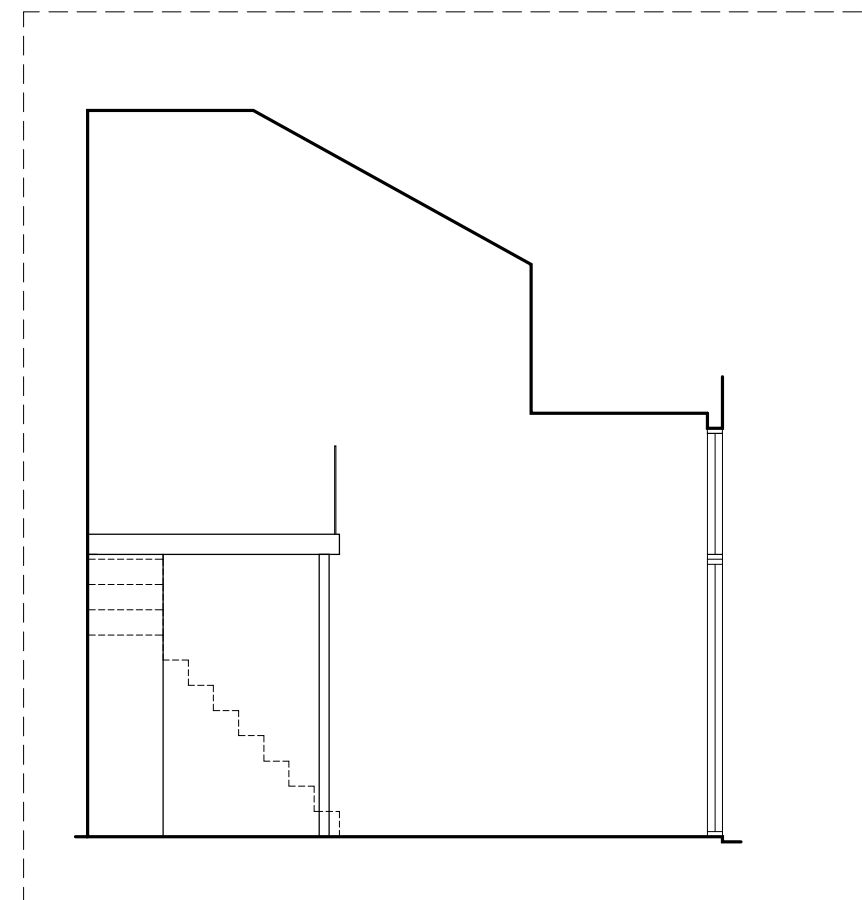
KEY PLAN



**TYPE C1c
2 BEDROOM**

89 sq.m. / 958 sq.ft. (including void area of 21 sq.m./226 sq.ft. above living, dining and kitchen)

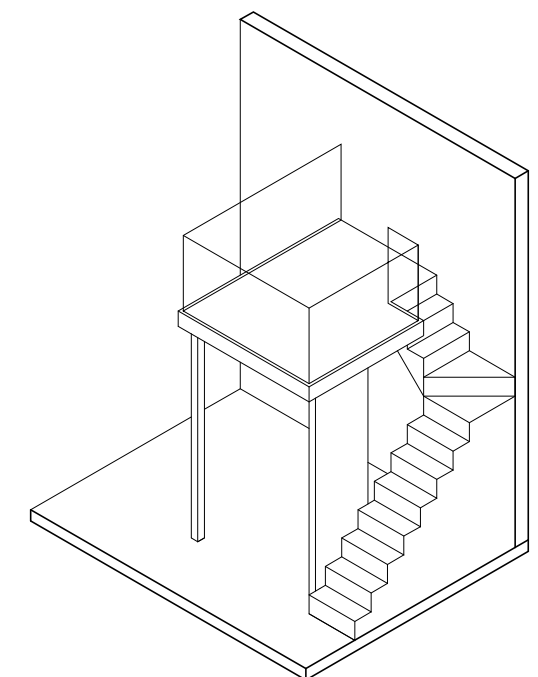
#10-04



PART SECTION A-A

FLOOR TO ROOF VARIES FROM 4.20m TO 7.20m

TYPE C1c

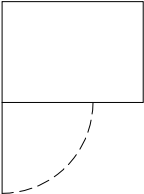


**ISOMETRIC VIEW OF
FURNITURE DECK**

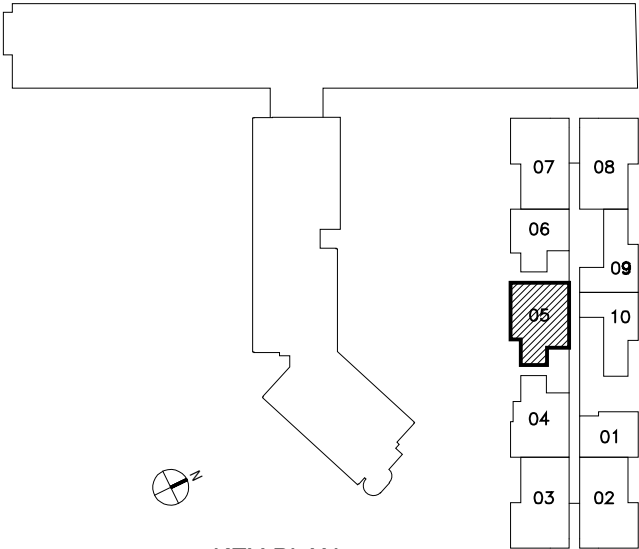
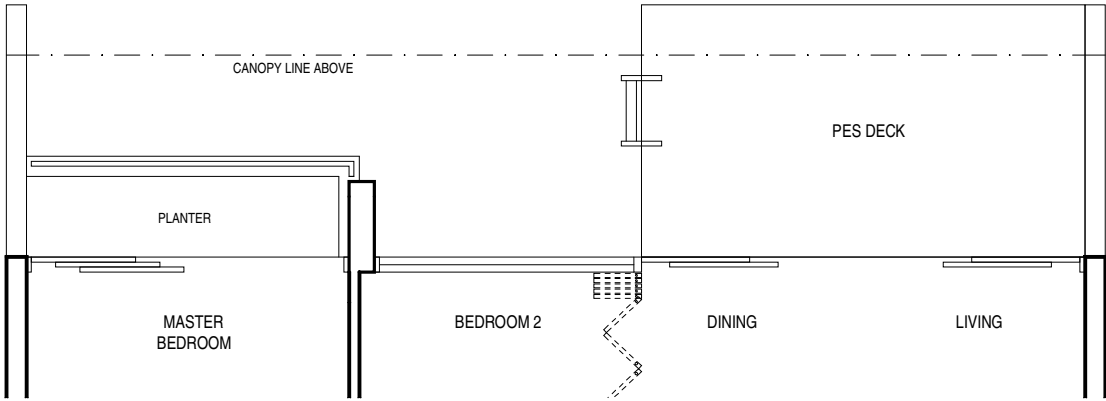
TYPE C2 (PES)
2 BEDROOM

76 sq.m. / 818 sq.ft.

#04-05



unit #04-05: including air-con condensers
of 1 sq.m./ 11 sq.ft.
accessory lot located
on 3rd floor podium carpark



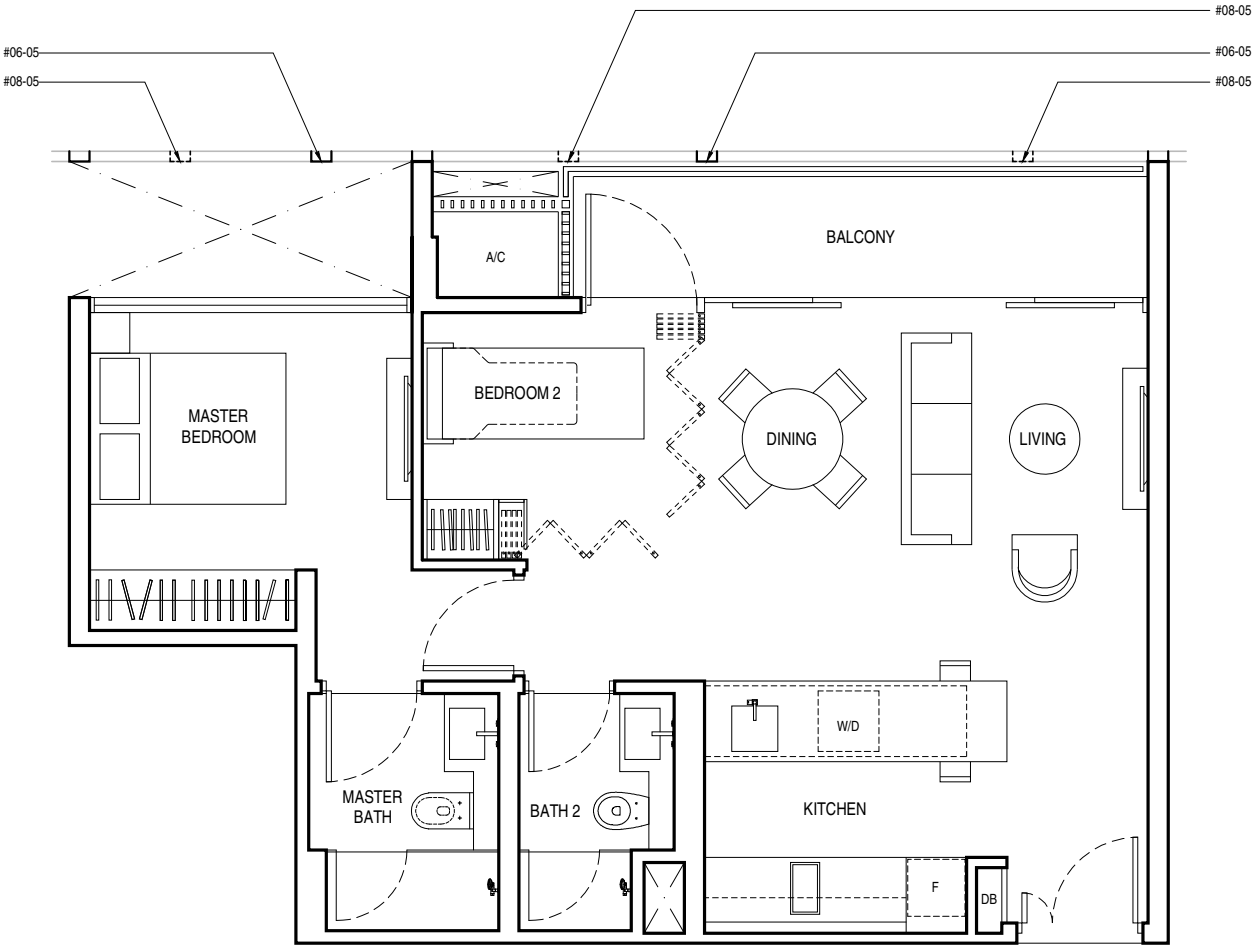
KEY PLAN

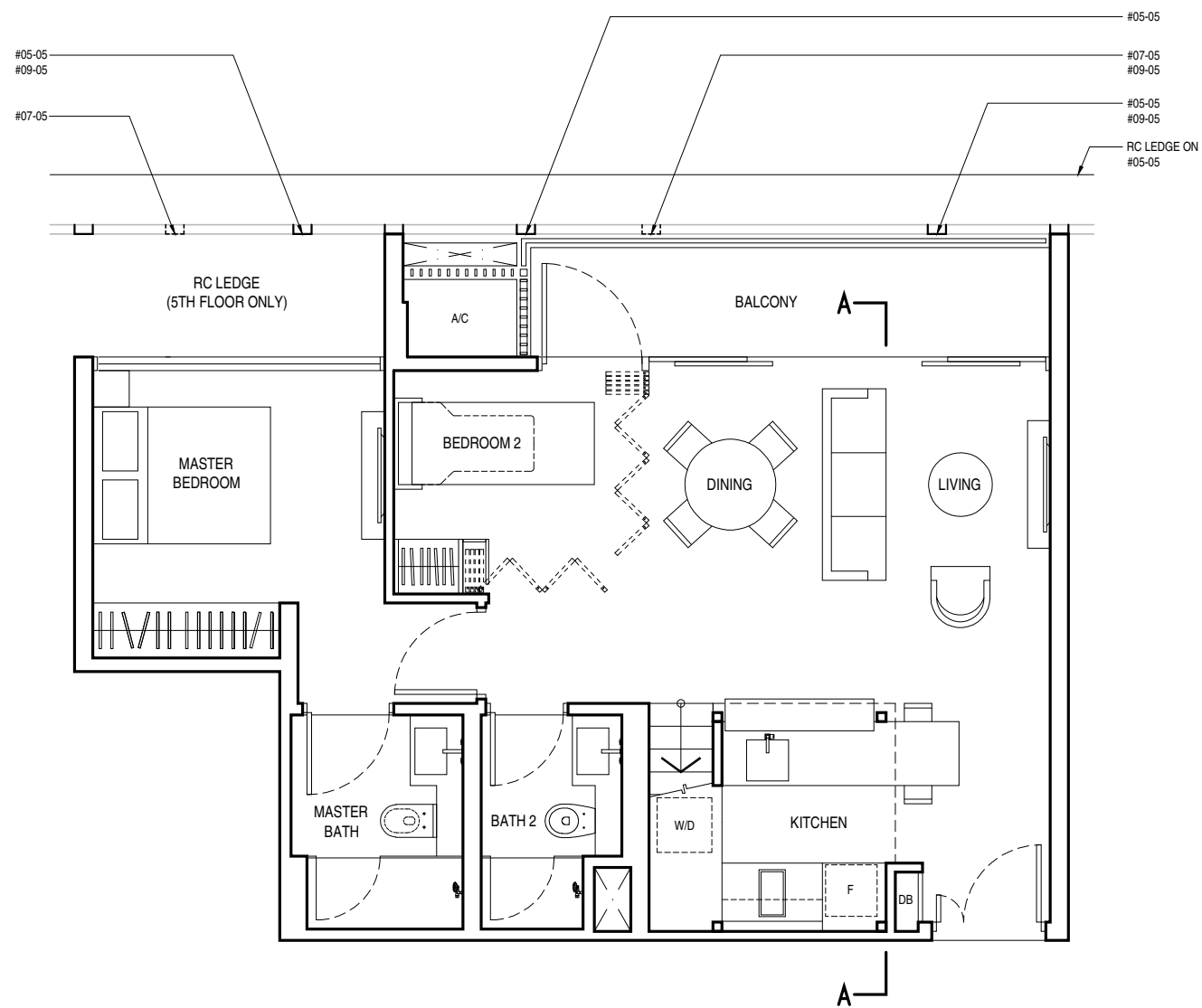
TYPE C2
2 BEDROOM

70 sq.m. / 753 sq.ft.

#06-05

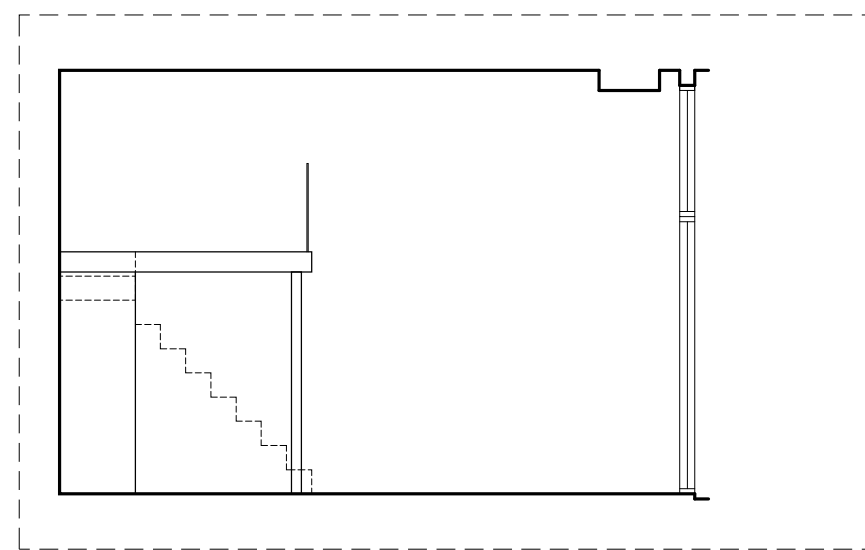
#08-05





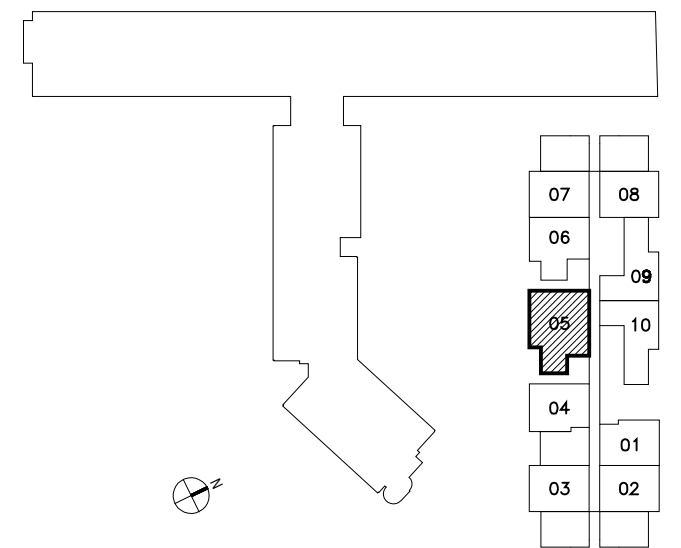
**TYPE C2b
2 BEDROOM**
70 sq.m. / 753 sq.ft.

#05-05
#07-05
#09-05

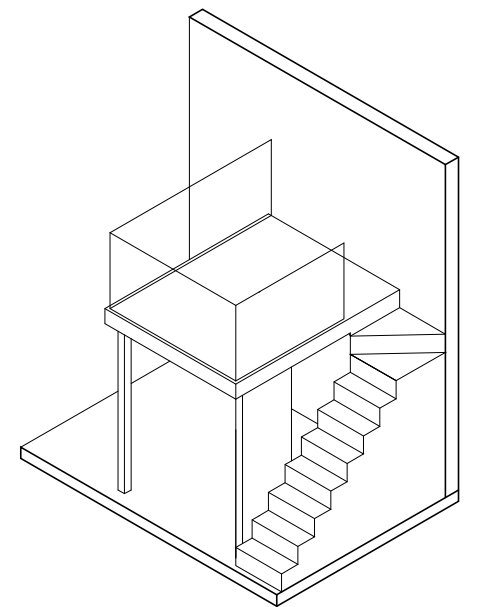


PART SECTION A-A
FLOOR TO FLOOR 4.20m

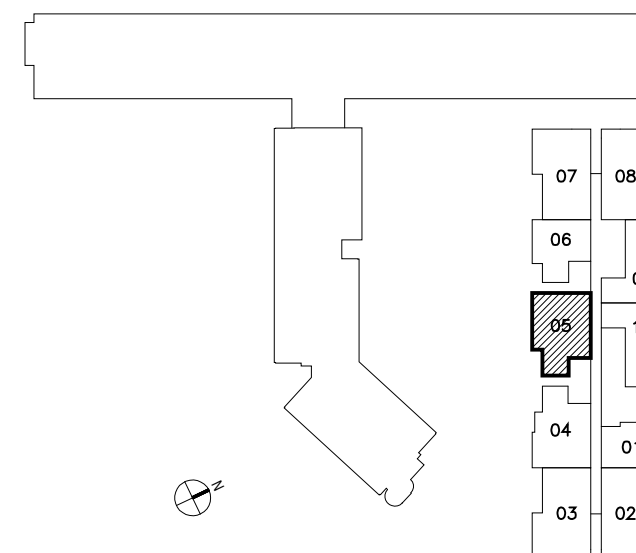
TYPE C2b



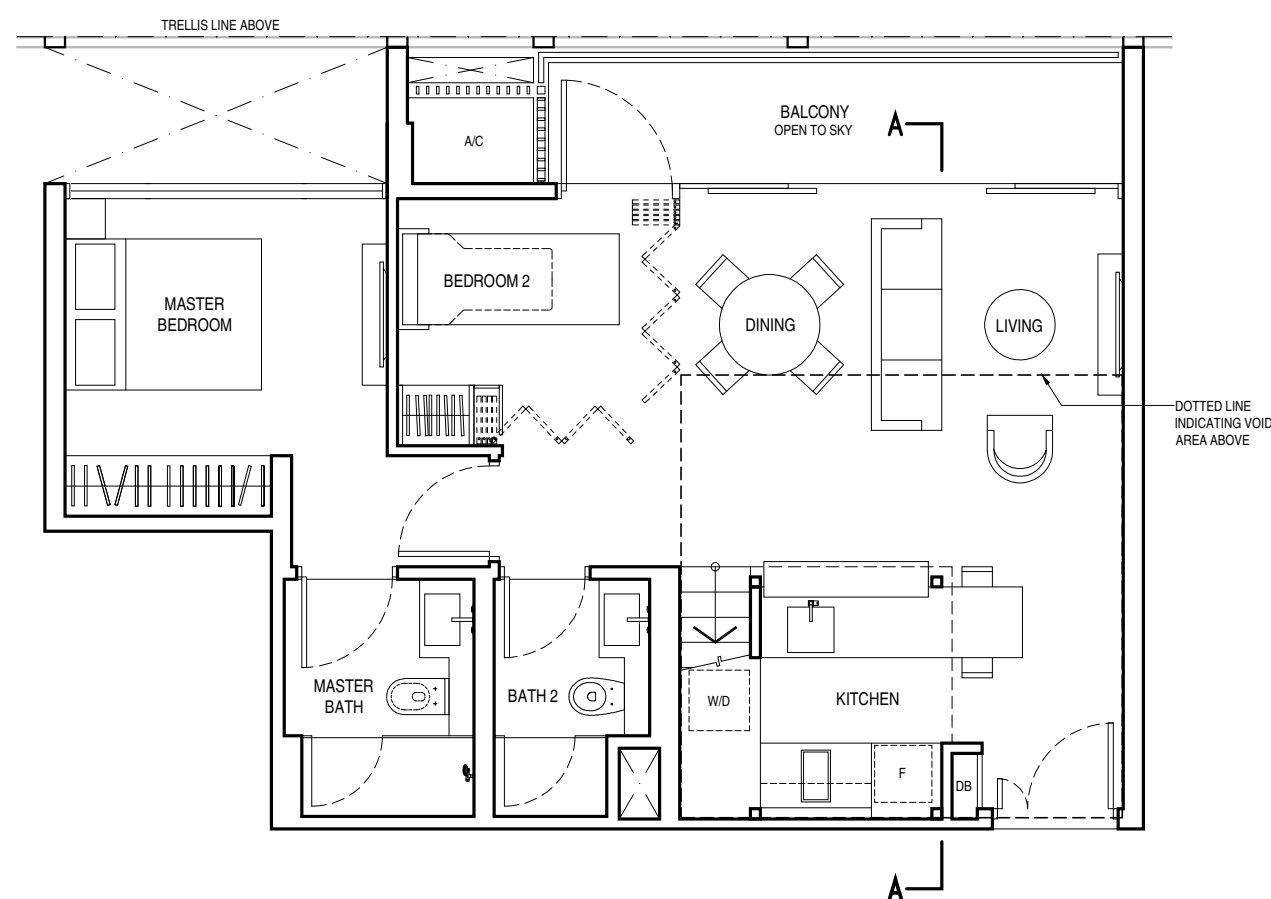
KEY PLAN



**ISOMETRIC VIEW OF
FURNITURE DECK**



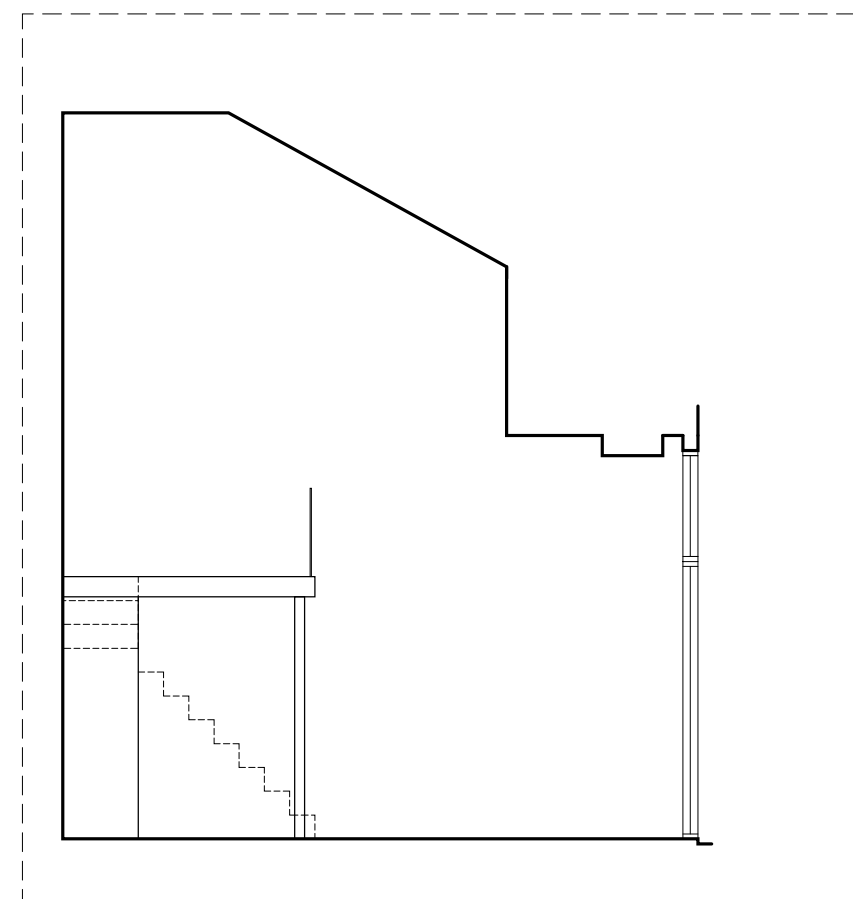
KEY PLAN



TYPE C2c
1 BEDROOM

91 sq.m. / 980 sq.ft. (including void area of 21 sq.m./226 sq.ft. above living, dining and kitchen)

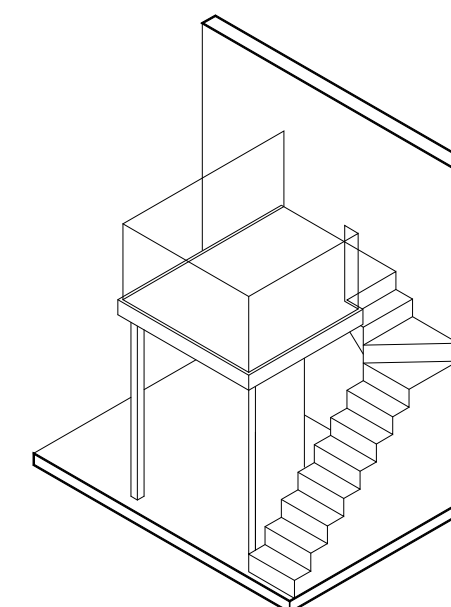
#10-05



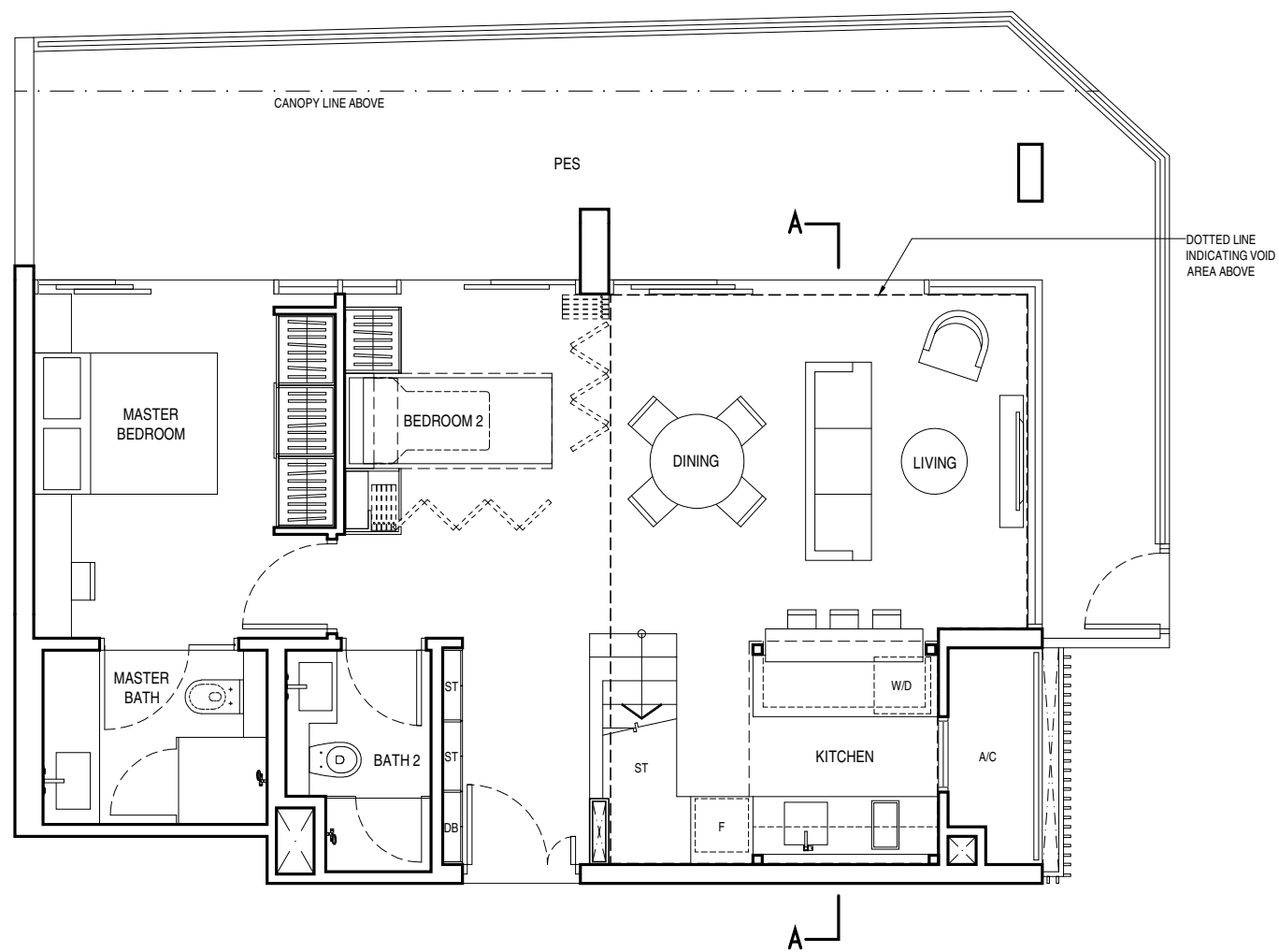
PART SECTION A-A

FLOOR TO ROOF VARIES FROM 4.20m TO 7.20m

TYPE C2c



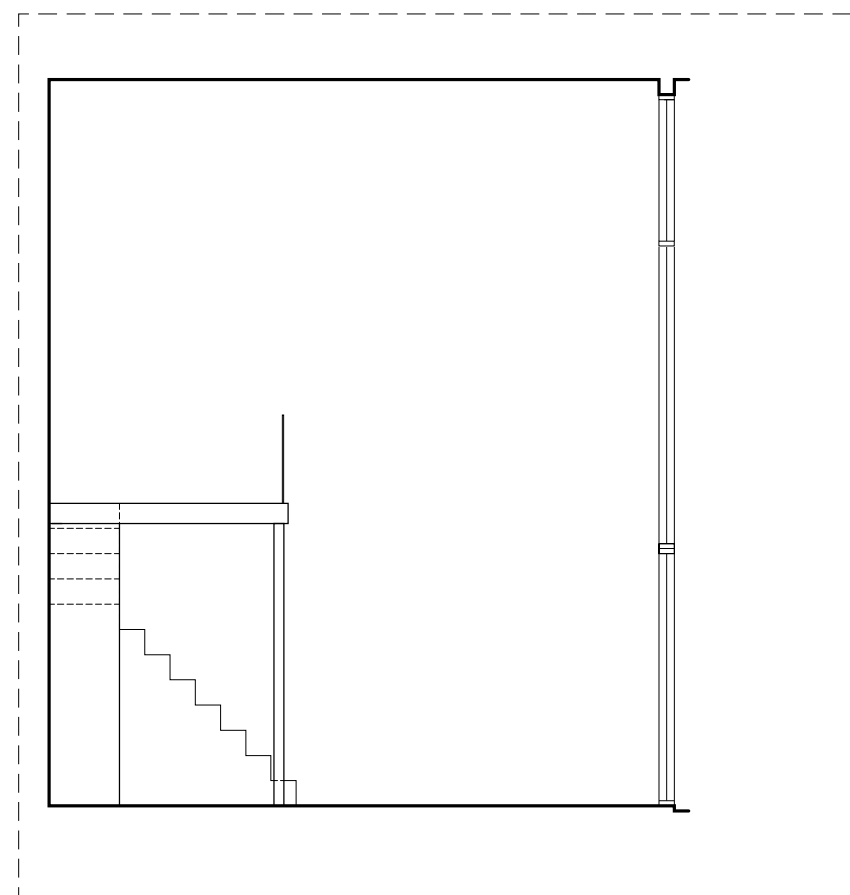
**ISOMETRIC VIEW OF
FURNITURE DECK**



TYPE C3a1 (PES)
2 BEDROOM

128 sq.m. / 1,378 sq.ft. (including void area of 26 sq.m./280 sq.ft. above living, dining and kitchen)

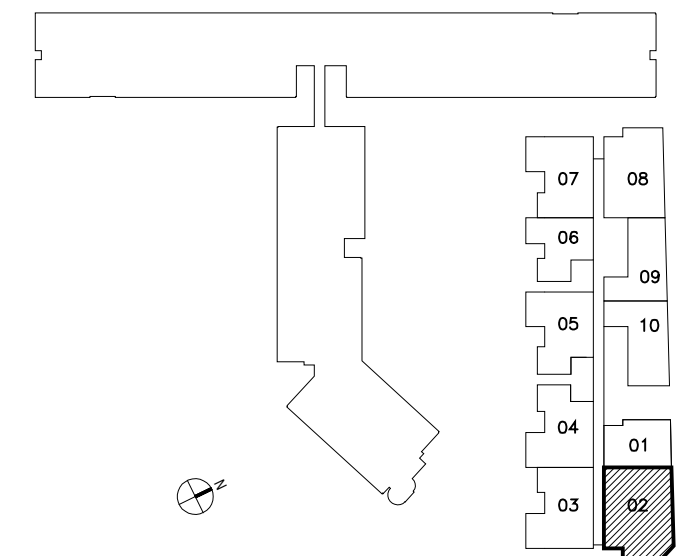
#04-02



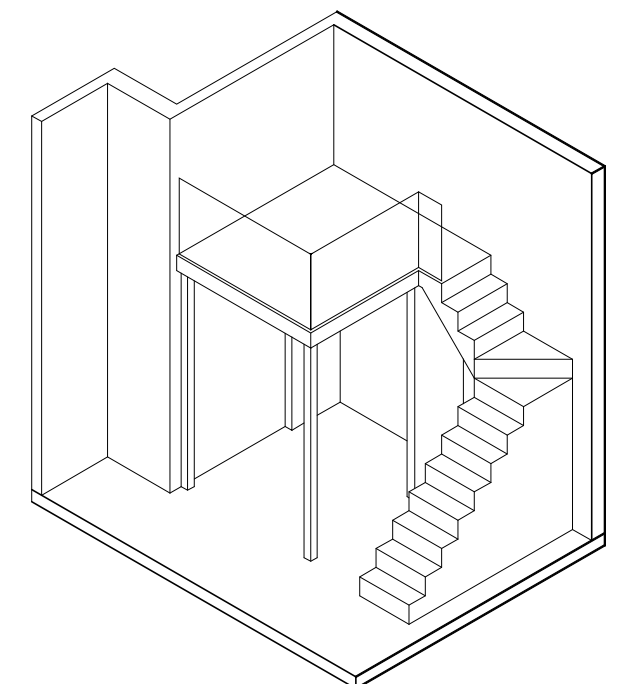
PART SECTION A-A

FLOOR TO FLOOR 7.20 m. ABOVE LIVING/
DINING AND KITCHEN

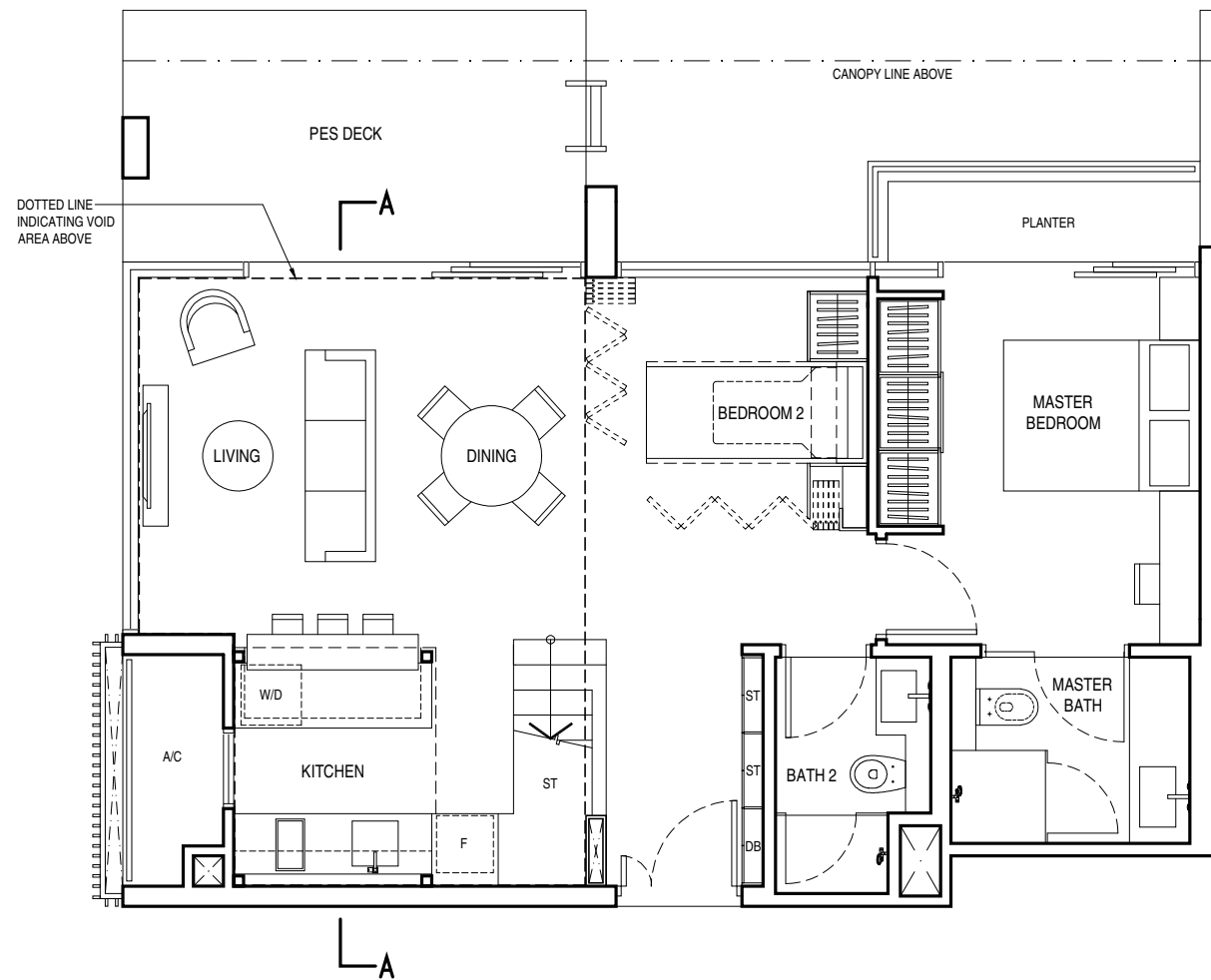
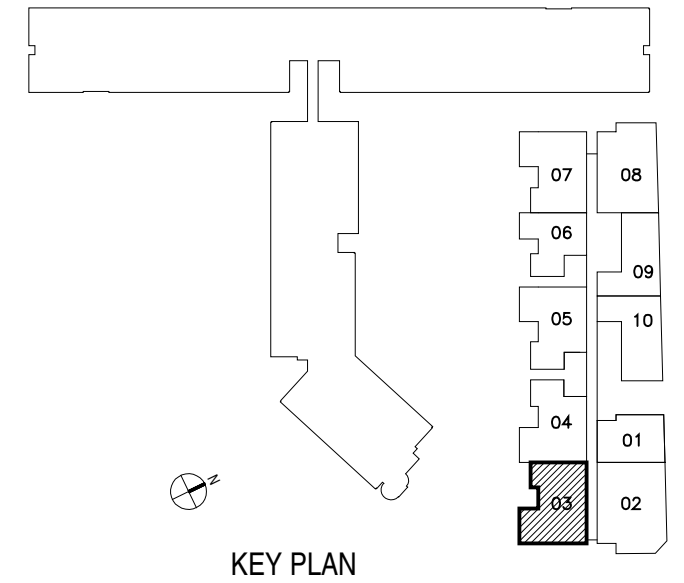
TYPE C3a1(PES)



KEY PLAN

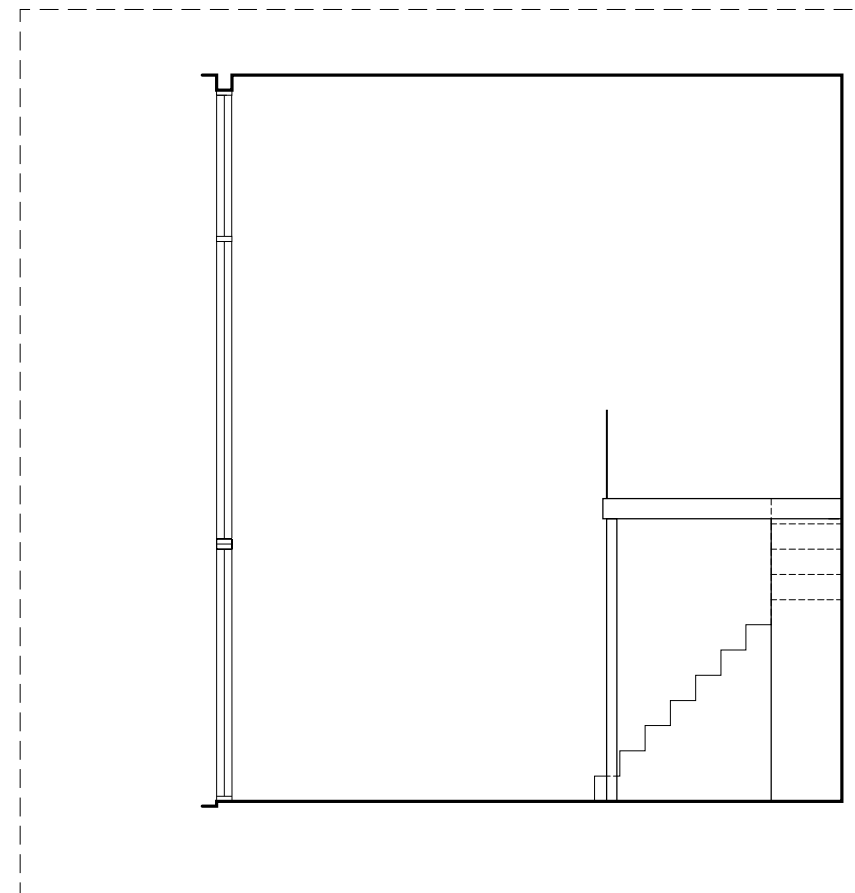


**ISOMETRIC VIEW OF
FURNITURE DECK**

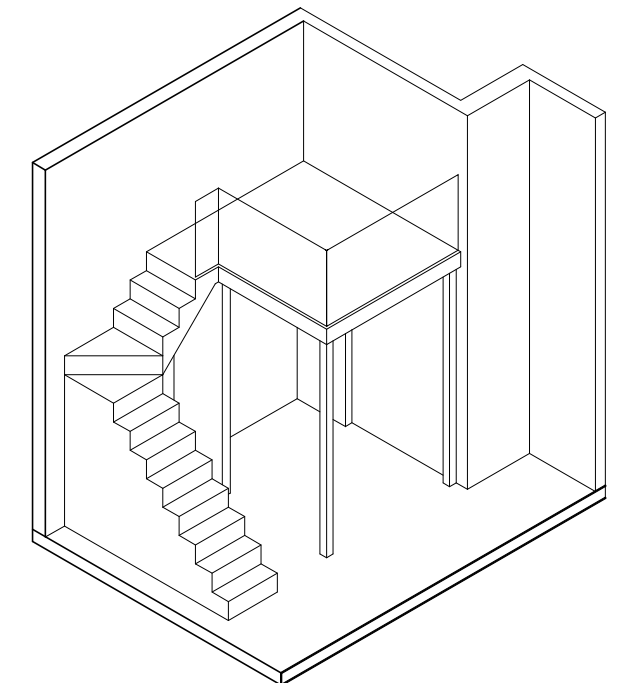


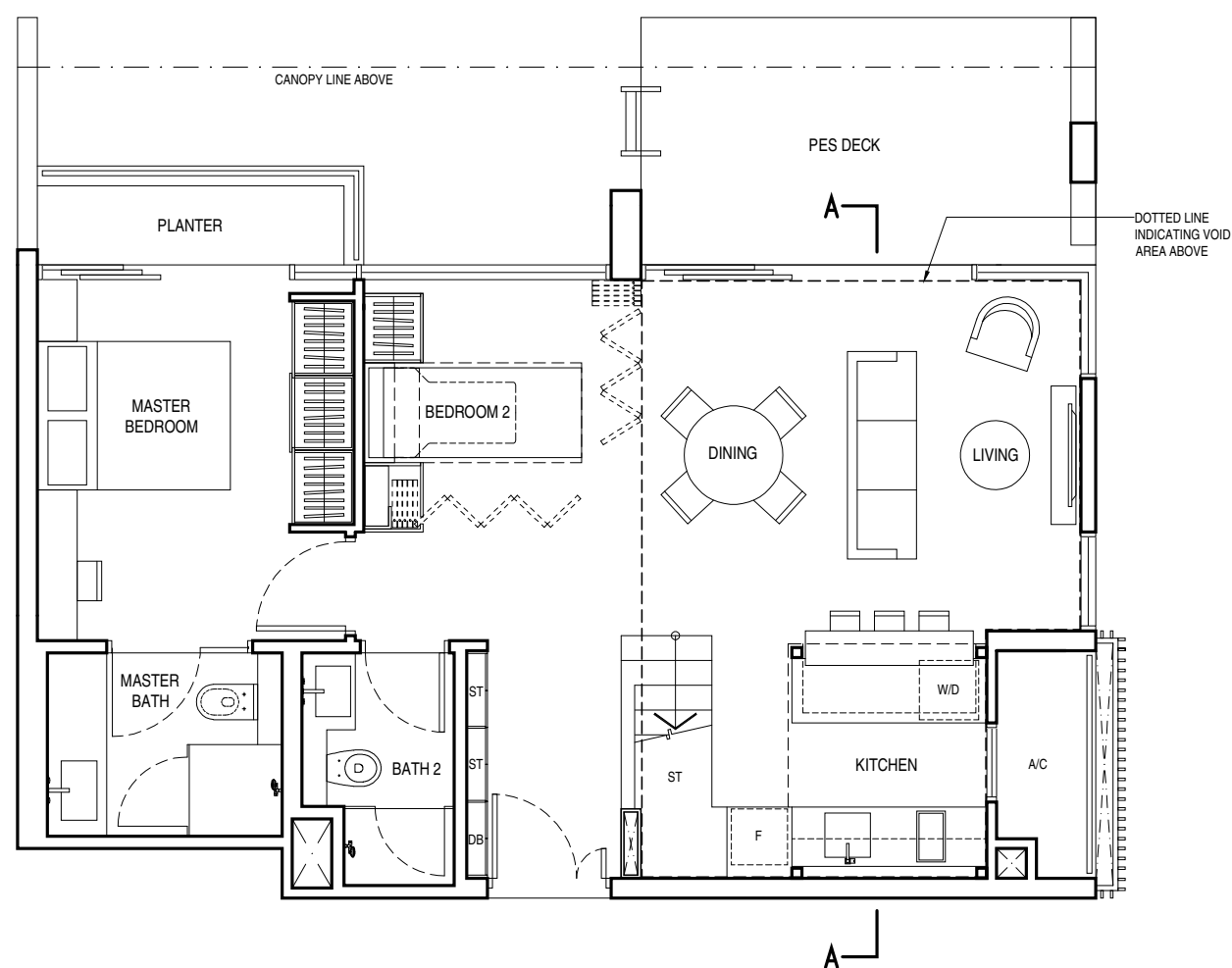
107 sq.m. / 1,152 sq.ft. (including void area of 26 sq.m./280 sq.ft. above living, dining and kitchen)

#04-03



TYPE C3a2(PES)

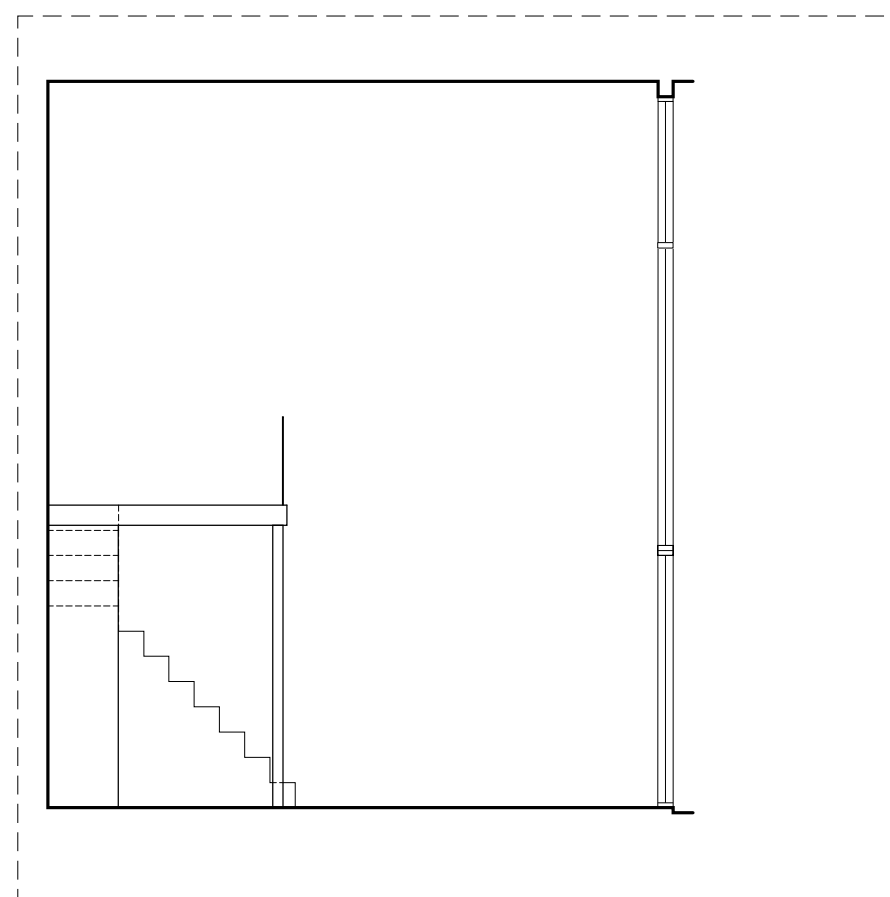




TYPE C3a3 (PES) 2 BEDROOM

107 sq.m. / 1,152 sq.ft. (including void area of 26 sq.m./280 sq.ft. above living, dining and kitchen)

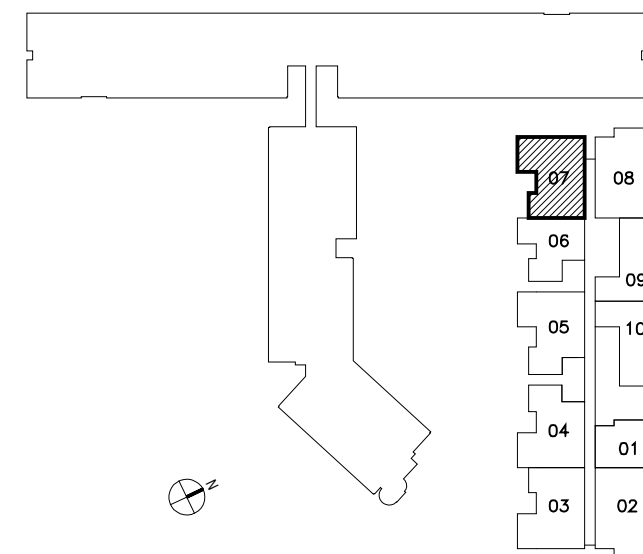
#04-07



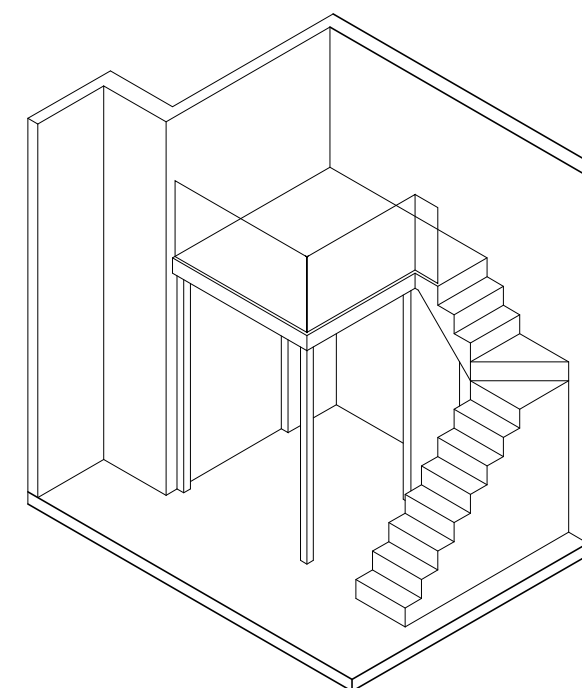
PART SECTION A-A

FLOOR TO FLOOR 7.20 m. ABOVE LIVING/
DINING AND KITCHEN

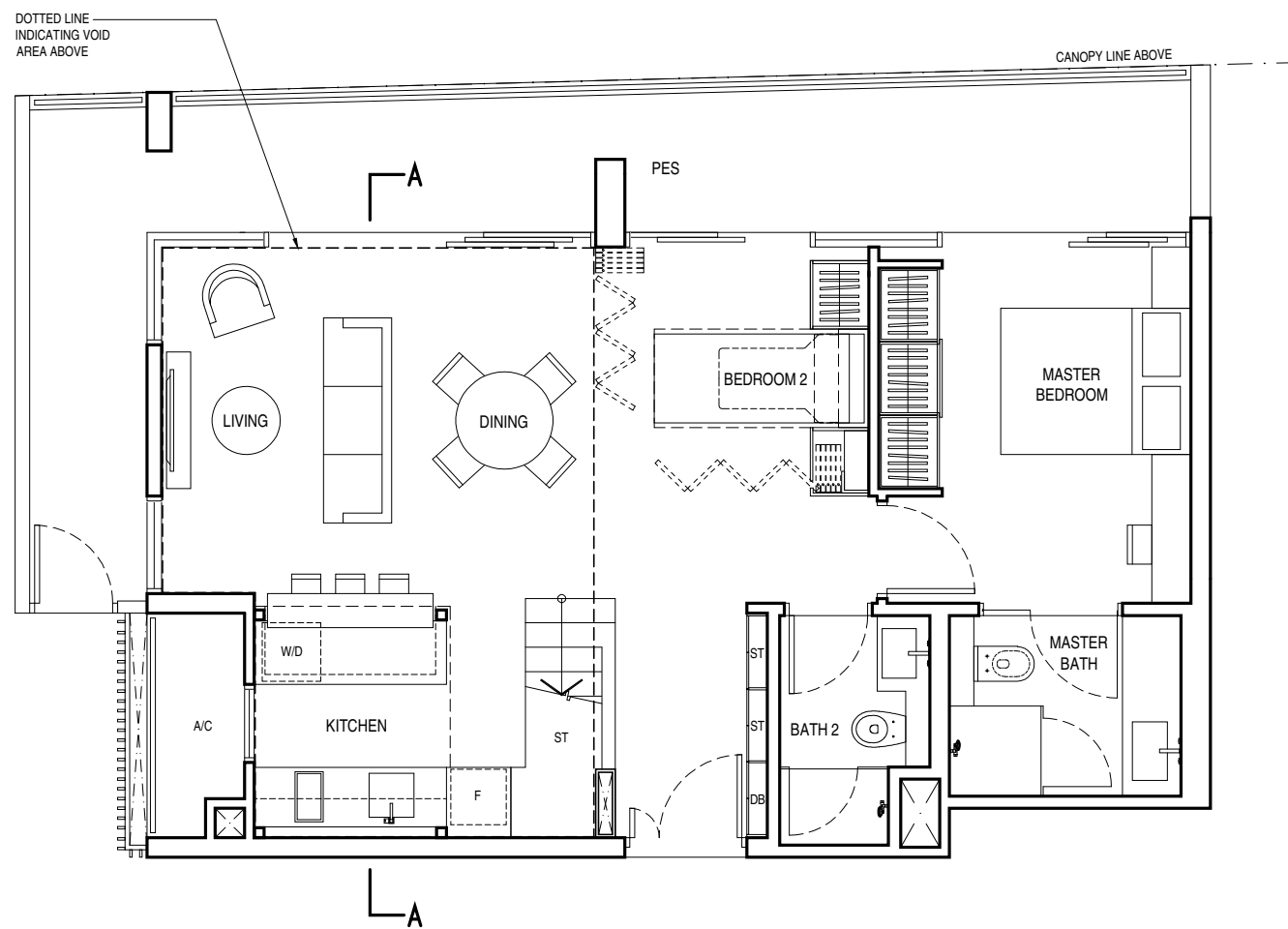
TYPE C3a3(PES)



KEY PLAN



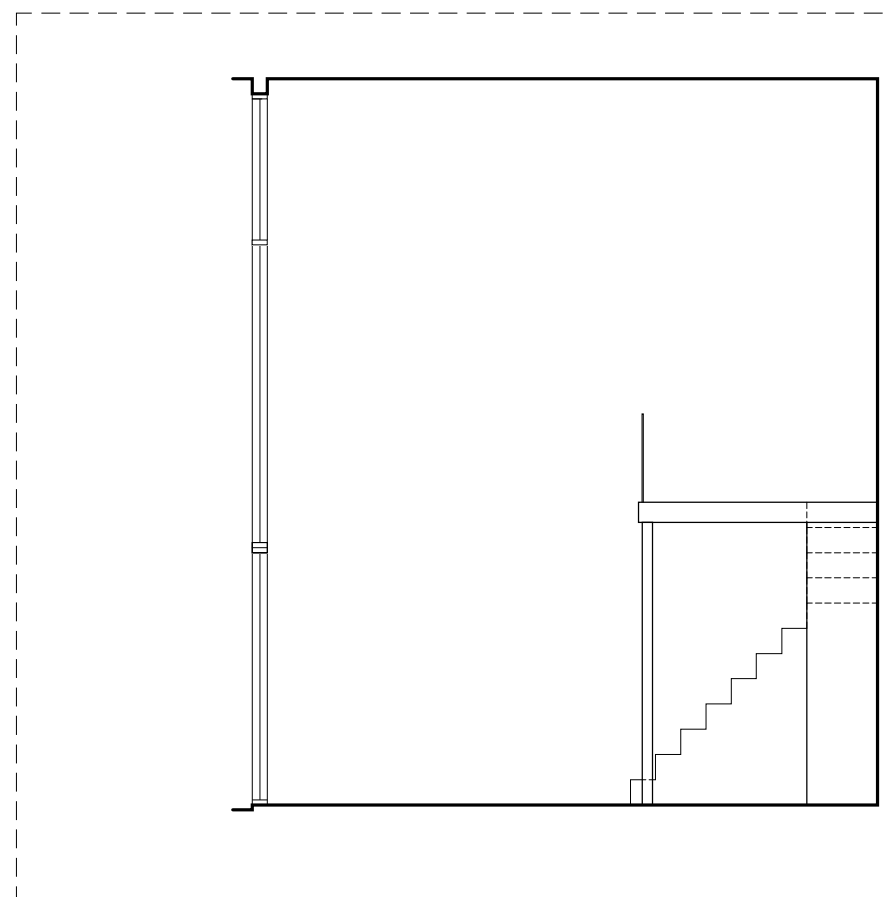
ISOMETRIC VIEW OF
FURNITURE DECK



TYPE C3a4 (PES) 2 BEDROOM

115 sq.m. / 1,238 sq.ft. (including void area of 26 sq.m./280 sq.ft. above living, dining and kitchen)

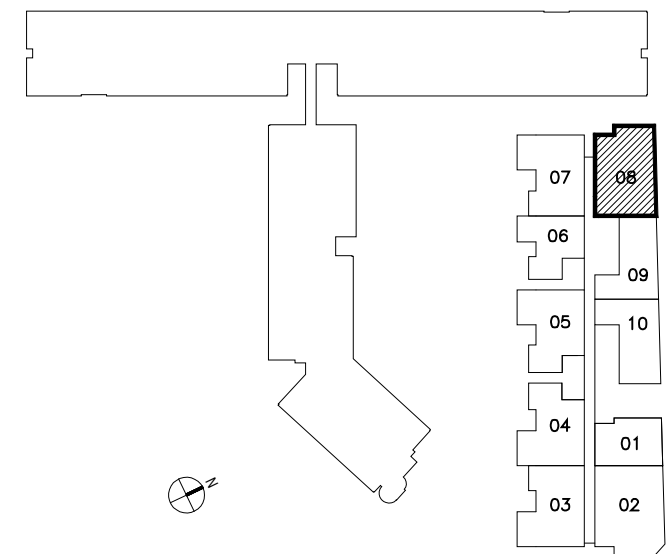
#04-08



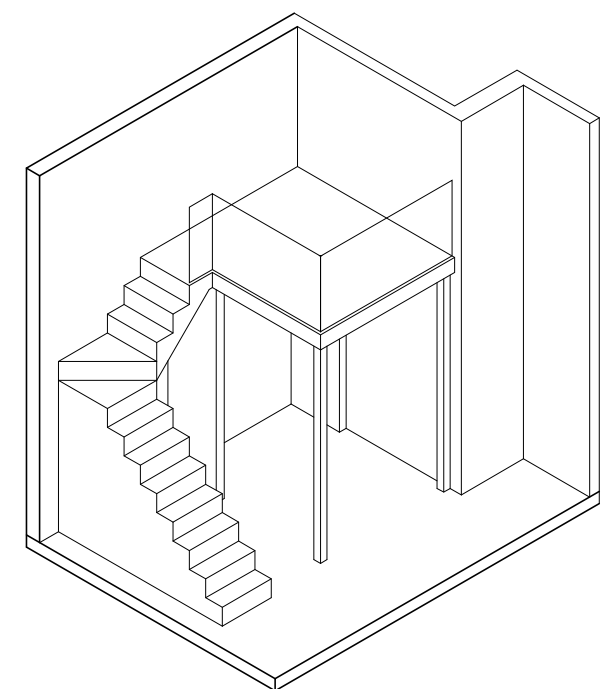
PART SECTION A-A

FLOOR TO FLOOR 7.20 m. ABOVE LIVING/
DINING AND KITCHEN

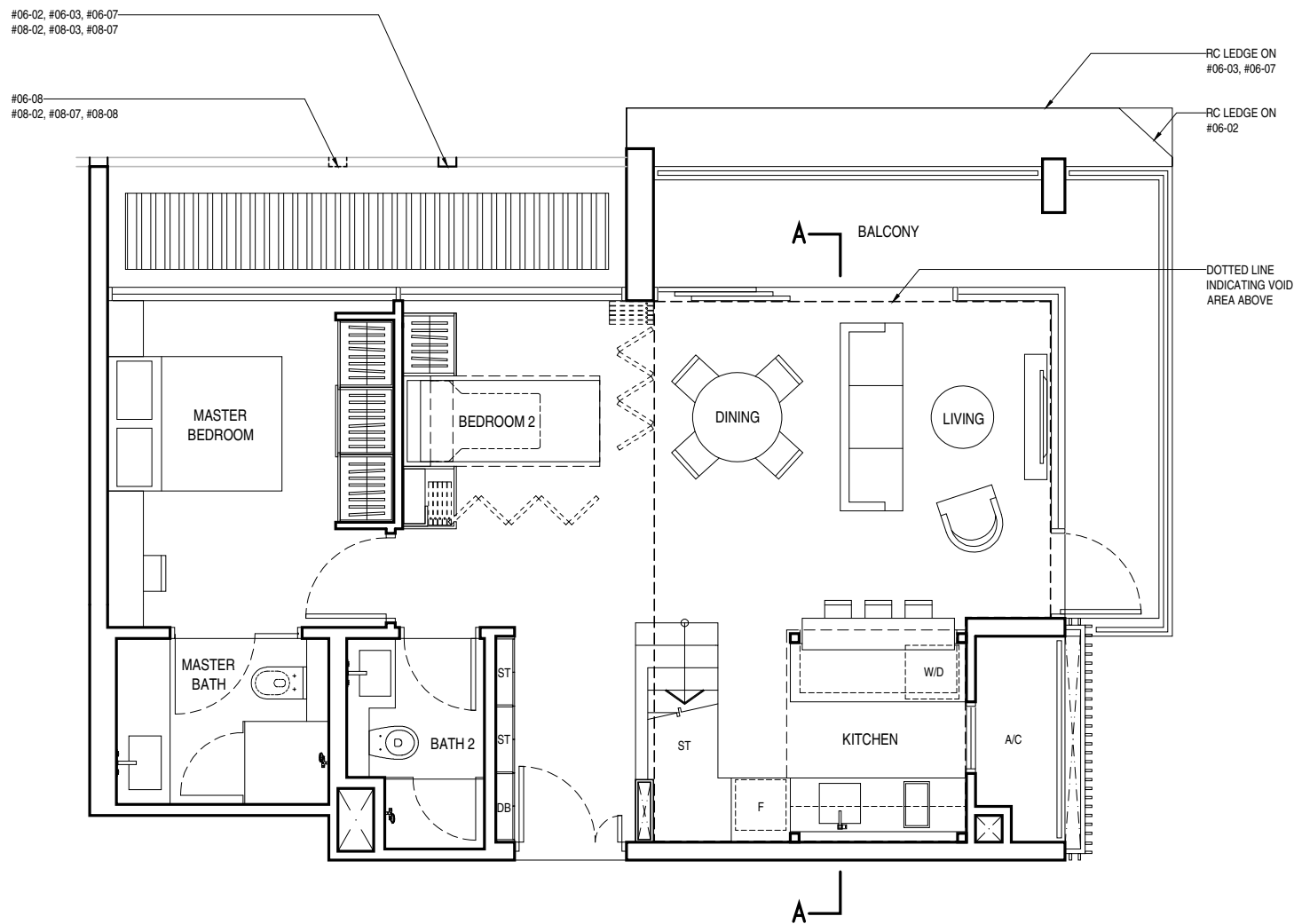
TYPE C3a4(PES)



KEY PLAN



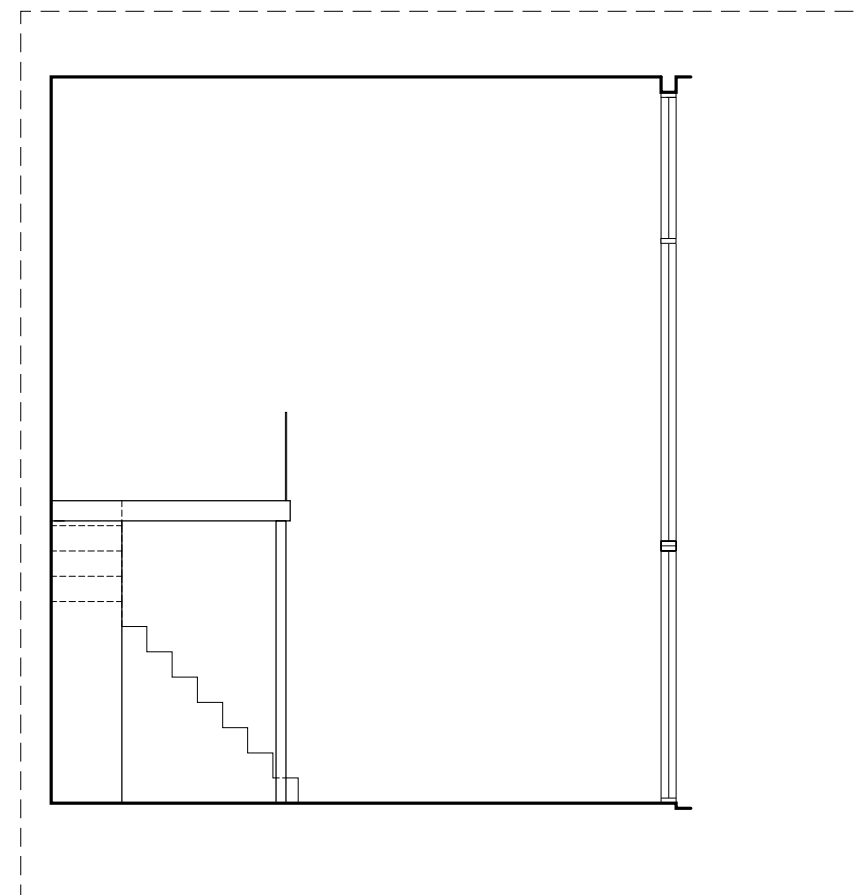
ISOMETRIC VIEW OF
FURNITURE DECK



**TYPE C3a
2 BEDROOM**

104 sq.m. / 1,119 sq.ft. (including void area of 26 sq.m./280 sq.ft. above living, dining and kitchen)

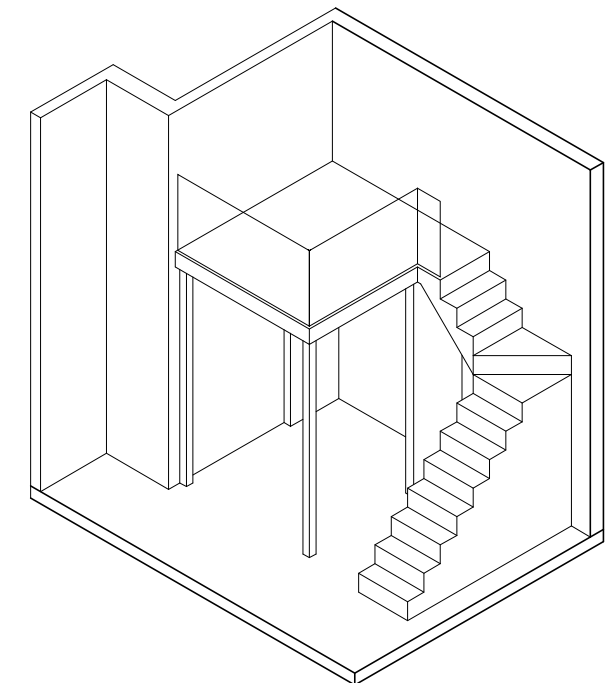
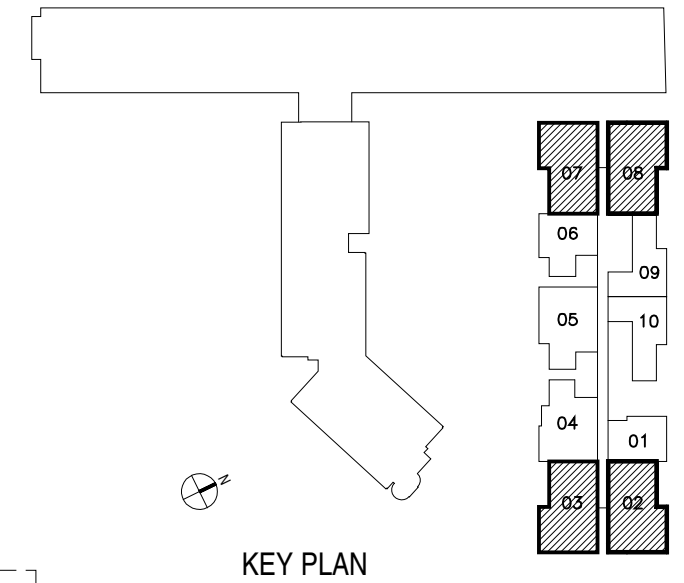
#06-02 #06-03 (MIRROR)
#06-07 #06-08 (MIRROR)
#08-02 #08-03 (MIRROR)
#08-07 #08-08 (MIRROR)



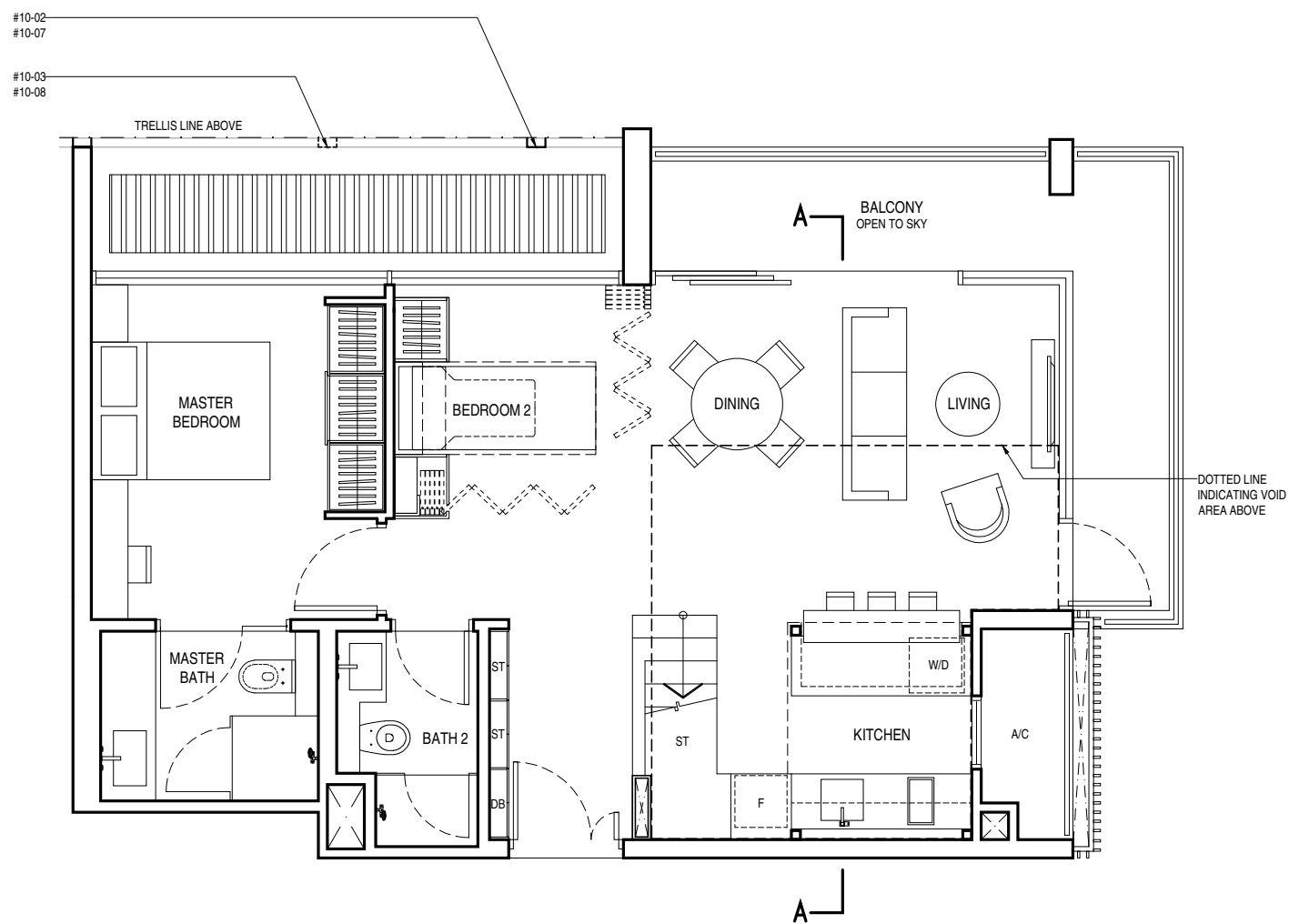
PART SECTION A-A

FLOOR TO FLOOR 7.20 m. ABOVE LIVING/
DINING AND KITCHEN

TYPE C3a



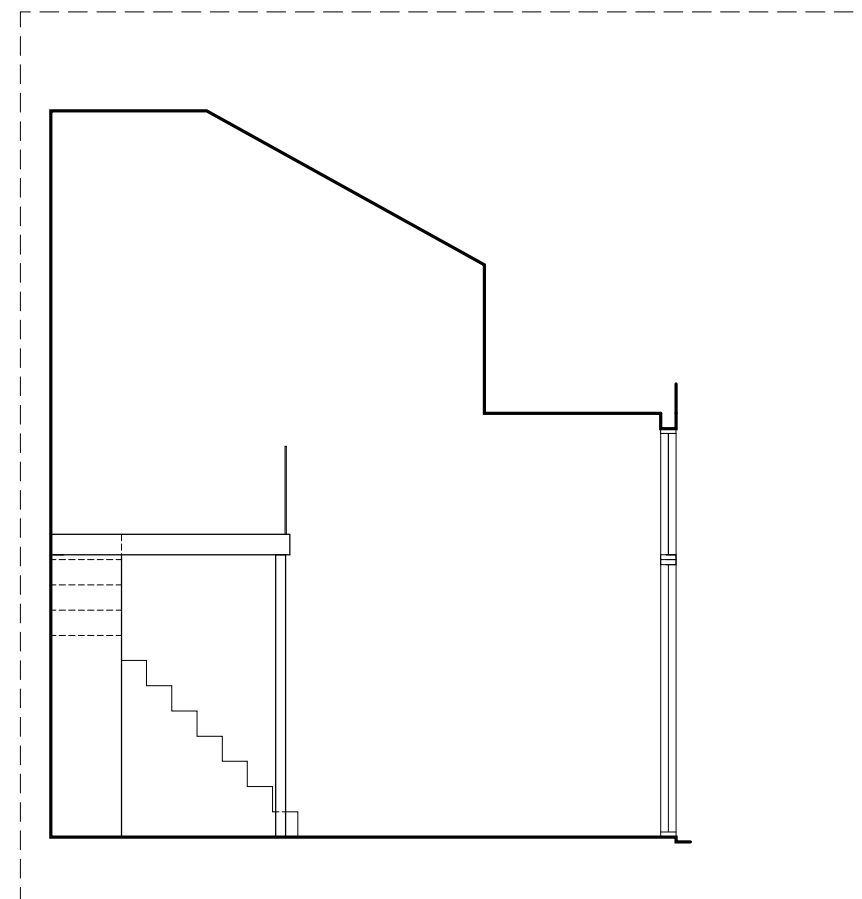
**ISOMETRIC VIEW OF
FURNITURE DECK**



TYPE C3c 2 BEDROOM

97 sq.m. / 1,044 sq.ft. (including void area of 19 sq.m./205 sq.ft.
above living, dining and kitchen)

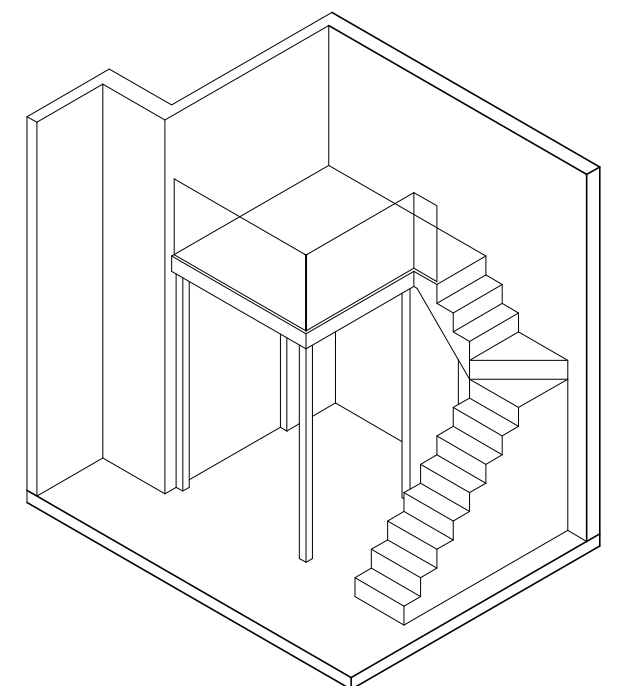
#10-02 #10-03 (MIRROR)
#10-07 #10-08 (MIRROR)



PART SECTION A-A

FLOOR TO ROOF VARIES FROM 4.20m TO 7.20m

TYPE C3c



ISOMETRIC VIEW OF FURNITURE DECK